

# SŪWRETLEW. ÓNERI 1

*Uliwma bilim beriw mektepleriniń  
1-klasi ushin sabaqlıq*

*Ózbekstan Respublikası Xalıq bilimlendiriw ministrligi  
basiwǵa usınǵan*

*Jańa basılım*



Tashkent – 2021

UO'K 75.02(075.3)  
KBK 85.1ya71  
C 38

*Dúziwshiler:*  
**Alfiya Salixova, Dilfuza Shayakubova, Barno Yunusova**

*Juwaplı redaktor:*  
Asqarali Sulaymanov

*Pikir bildiriwshiler:*

- A.Umarov Kamaliddin Bekzad atındaǵı Milliy súwretshilik hám dizayn institutı “Miniatyura hám kitap grafikası” kafedrası muǵallimi.
- A.Imamova Respublikalıq qánigelestirilgen dizayn mektebiniń joqarı kategoriyalı muǵallimi, kórkem óner xızmetkeri.
- Z.Agzamova Respublikalıq qánigelestirilgen dizayn mektebi aǵa muǵallimi.
- N.Vahobova Tashkent qalası Yangihayat rayonı 32-sanlı ulıwma bilim beriw mektebiniń muǵallimi.

Súwretlew óneri [Tekst]: sabaqlıq 1-klass / A.Salixova [hám basqa.]. – Tashkent: Respublikalıq bilimlendiriw orayı, 2021. – 72 b.

ISBN 978-9943-7115-5-6

UO'K 75.02(075.3)  
KBK 85.1ya71

## Shártli belgiler:



– úyrenemiz



– sabaq juwmaǵı



– sizamız



– boyaymız



– tapsırma

*Respublikalıq maqsetli kitap qorı qarjıları  
esabınan basıp shıǵarıldı.*

*Original maket hám dizayn koncepciyası  
Respublikalıq bilimlendiriw orayı tárepinen islendi.*

ISBN 978-9943-7115-5-6

© Respublikalıq bilimlendiriw orayı, 2021.

# MAZMUNÍ



## 1. GRAFIKA

|  |    |
|--|----|
| Súwretlew óneri sabağında paydalanılatuğın jumıs quralları ..... | 5  |
| Sızıq túrleri .....  | 7  |
| Qızıqlı formalar .....   | 8  |
| Kewilli sanlar .....   | 10 |
| Ayqulaq reñler kórinisi .....                                    | 12 |
| Reñ hám gúller .....   | 14 |
| Japıraqlardıń súwretin salıw .....                               | 16 |
| “Gúz jemisleri” temasında súwret salıw .....                     | 18 |
| “Kirpitiken bağda” temasında súwret salıw .....                  | 22 |

## 2. MÚSINSHILIK

|   |    |
|---|----|
| Milliy ıdıs hám miyweler islew .....                  | 26 |
| Shóje menen úyrektiń palapanın islew .....            | 32 |
| Kúshik penen pıshıqtıń balasınıń formasın islew ..... | 34 |
| Shabaqtıń súwretin salıw .....                        | 36 |
| Jiraf hám pil formasın islew .....                    | 37 |
| Pingvin formasın soğıw .....                          | 39 |
| “Jańa jıl” (Ulıwmalastırıwshı sabaq) .....            | 40 |

## 3. REÑLI SÚWRET

|  |    |
|--|----|
| “Qıs kórinisi” temasında súwret salıw .....              | 42 |
| Gójektıń súwretin salıw .....                            | 44 |
| Túlkiniń súwretin salıw .....                            | 45 |
| Ayıwdıń balasınıń súwretin salıw .....                   | 46 |
| Baysheshek súwretin salıw .....                          | 48 |
| “Gúltúbektegi gúller” temasında súwret salıw .....       | 50 |
| “Anama sawğa” temasında súwret salıw .....               | 51 |
| 1-baqlaw jumısı. “Gúldáste” temasında súwret salıw ..... | 52 |
| “Úlkemizde Nawrız” temasında súwret salıw .....          | 53 |

## 4. KOMPOZICIYA

|   |    |
|---|----|
| “Geometriyalıq figuralardan payda bolğan tábiyat” temasında kompoziciya islew .....       | 56 |
| “Sarı gúl” (ot-shópler menen) temasında kompoziciya islew .....                           | 58 |
| “Gúbelekler” (gúller ústinde) temasında kompoziciya islew .....                           | 60 |
| “Pal hárre hám xan qızı” (pal hárre uyası hám gúller) temasında kompoziciya islew .....   | 61 |
| “Iynelik hám qumırsqa” (terek shaqası hám japıraqlarda) temasında kompoziciya islew ..... | 62 |
| “Tábiyat qushağındağı shıbın-shirkey” temasında kompoziciya islew .....                   | 64 |
| 2-baqlaw jumısı. “Gúlzar” .....   | 66 |
| “Jazğı sayaxat” temasında kompoziciya islew .....   | 68 |

# GRAFIKA



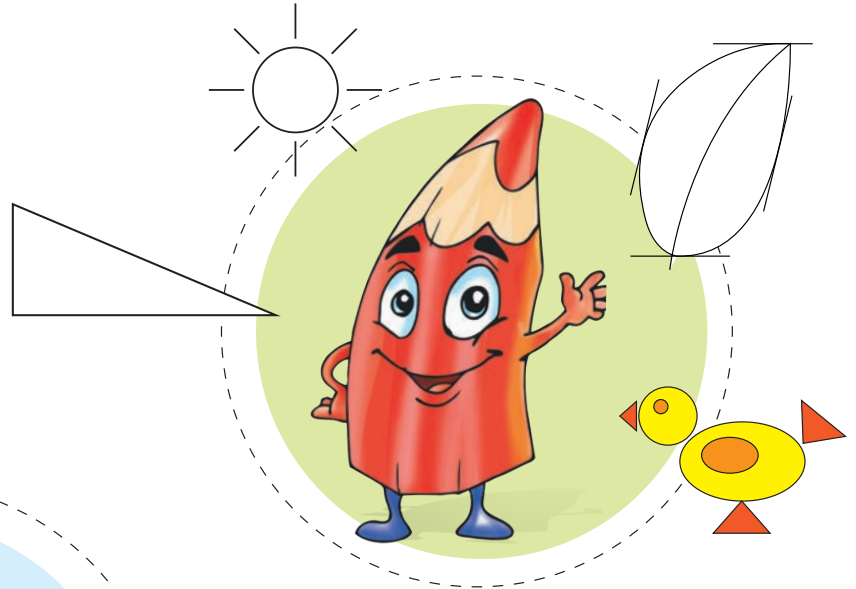
## SÚWRETLEW ÓNERI SABAĜÍNDA PAYDALANÍLATUĜÍN JUMÍS QRALLARÍ



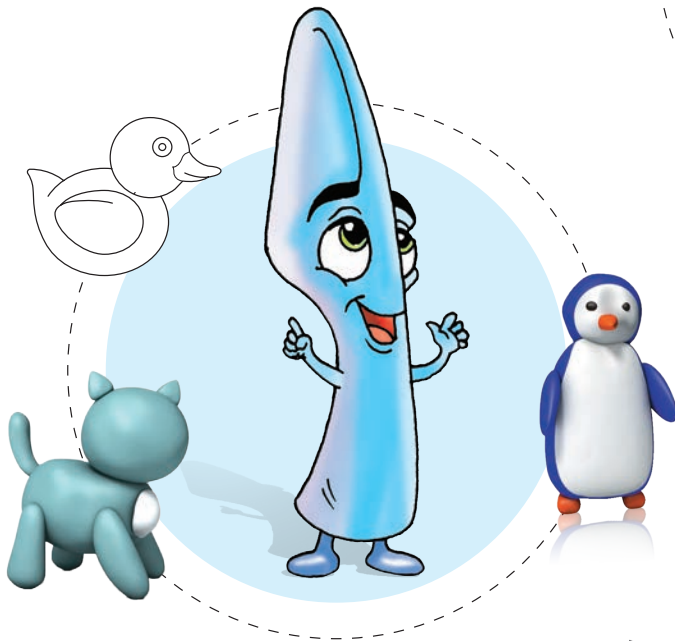
Shınıĝıw dápteriniń 3-betine reńli qálemler menen «Meniń súyikli oyınshıĝım» temasında súwret salıń.



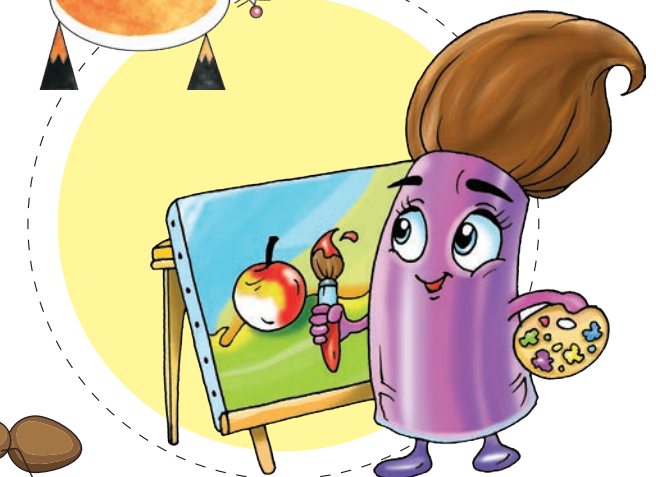
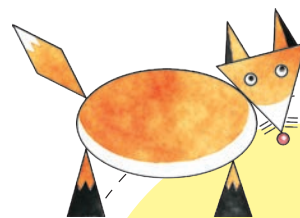
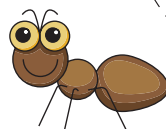
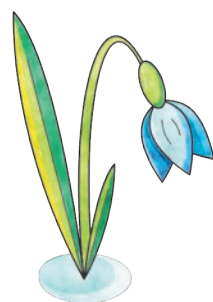
## SÚWRETLEW ÓNERINIŇ TÚRLERI



**Grafika**

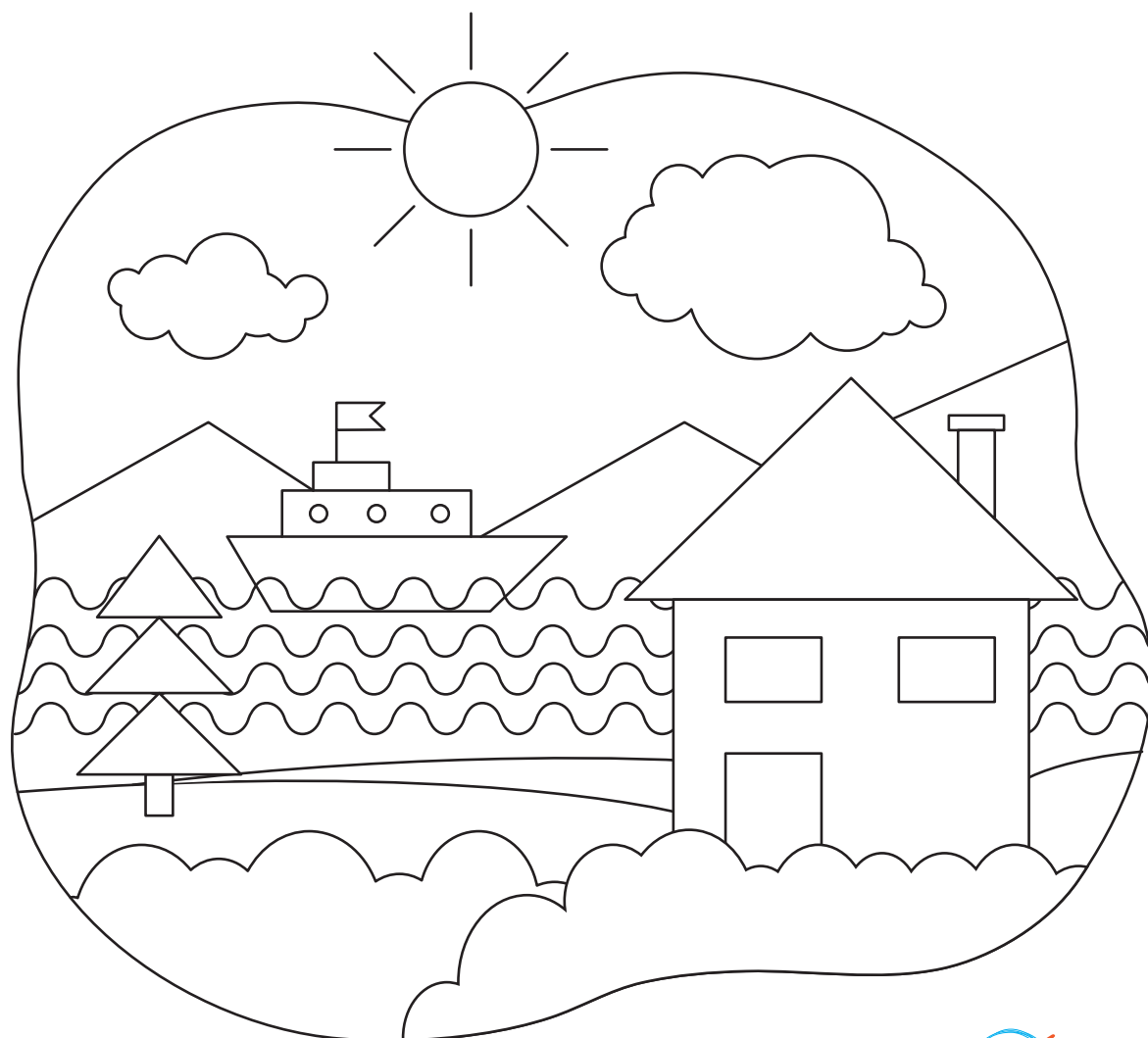
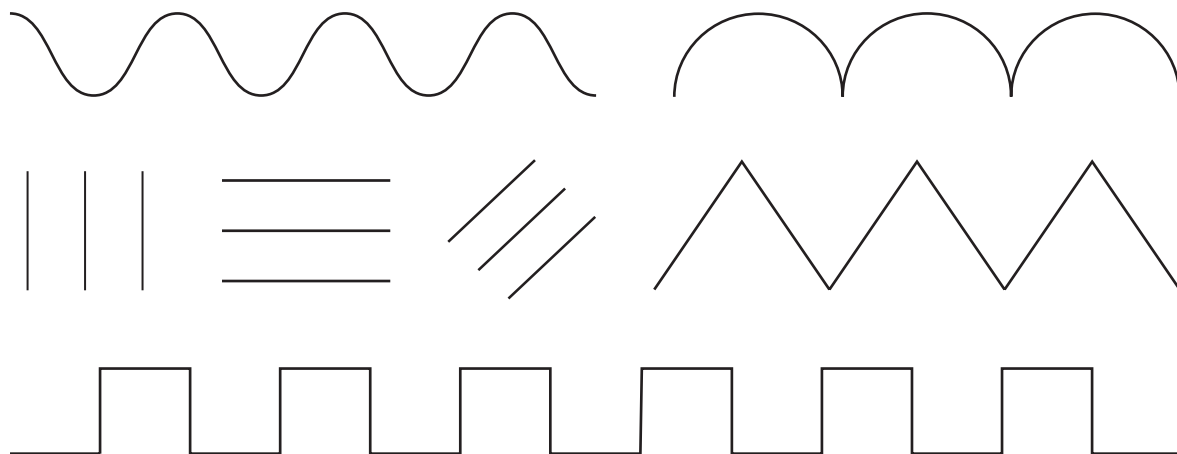


**Músinshilik**



**ReŇli súwret**

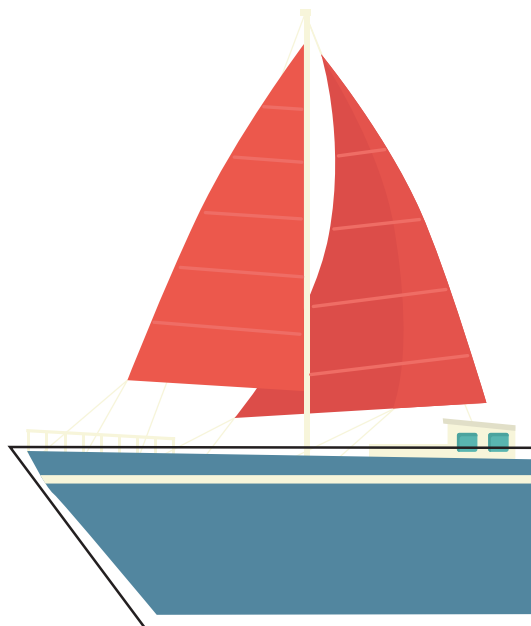
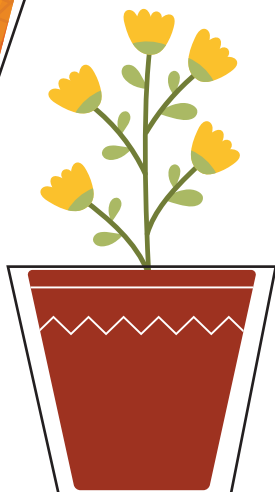
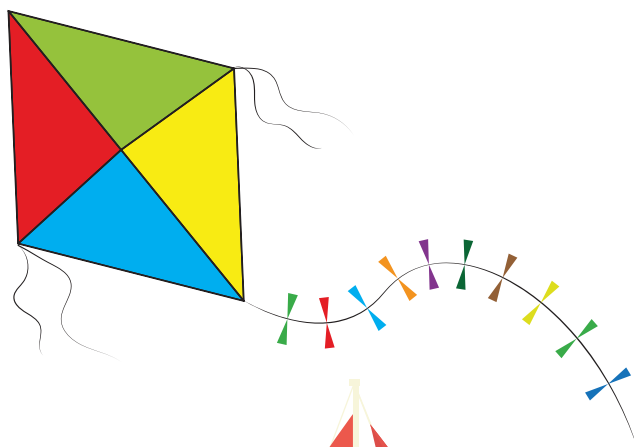
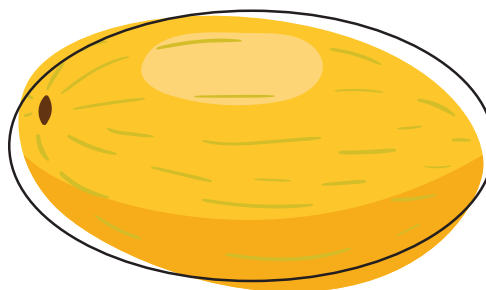
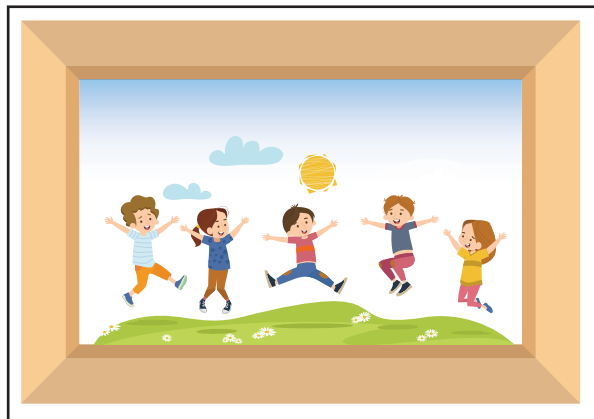
## Sızıq túrleri



Shınıǵıw dápteriniń 5-betine hár túrli sızıqlar járdeminde súwret salıń.



## Qiziqli formalar



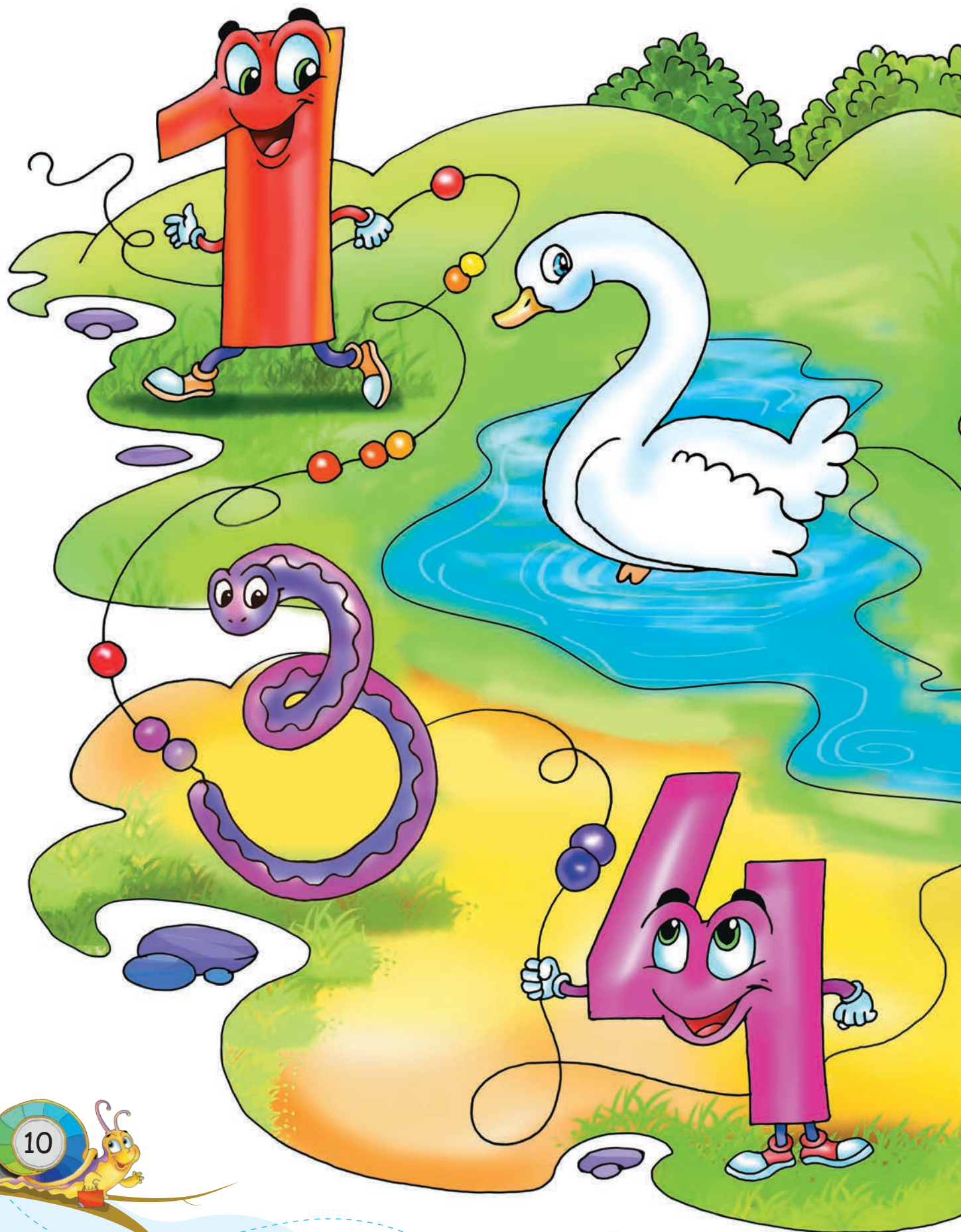




Shınıǵıw dápteriniń 7-betine geometriyalıq figuralardan paydalanıp súwret salıń.



## Kewilli sanlar





Sanlardı siz nege uqsatasız? Olardı shınıǵıw dápteriniń 9-betine salıń.



## Ауқулақ реңлердиң кóриниси



## Tiykarǵı reńler



+



=



+



=



+



=



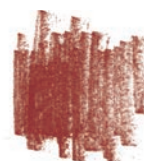
+



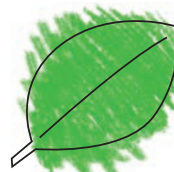
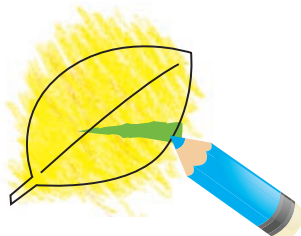
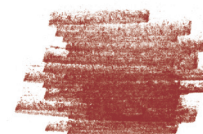
+



=



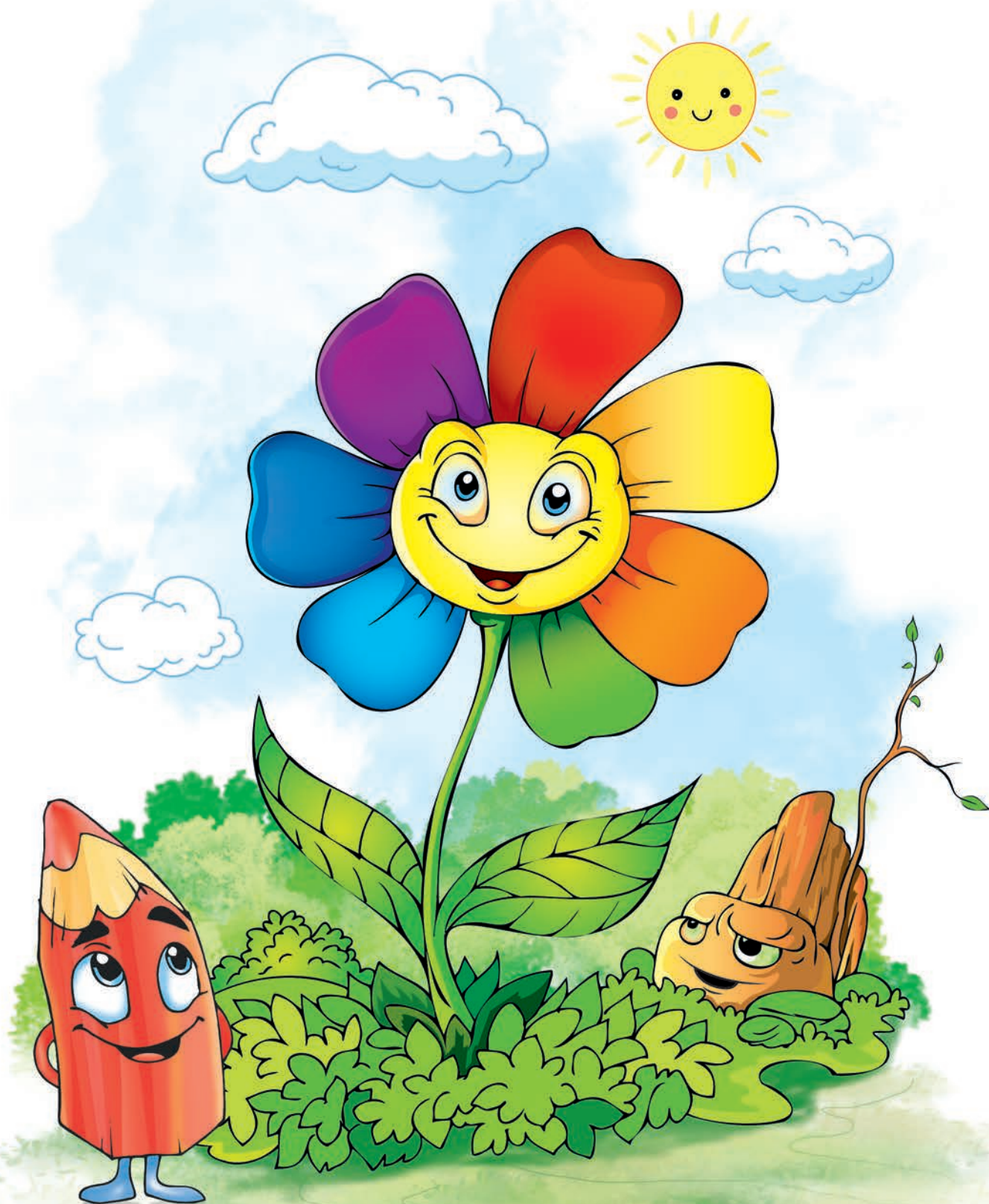
## Dóretilgen reńler

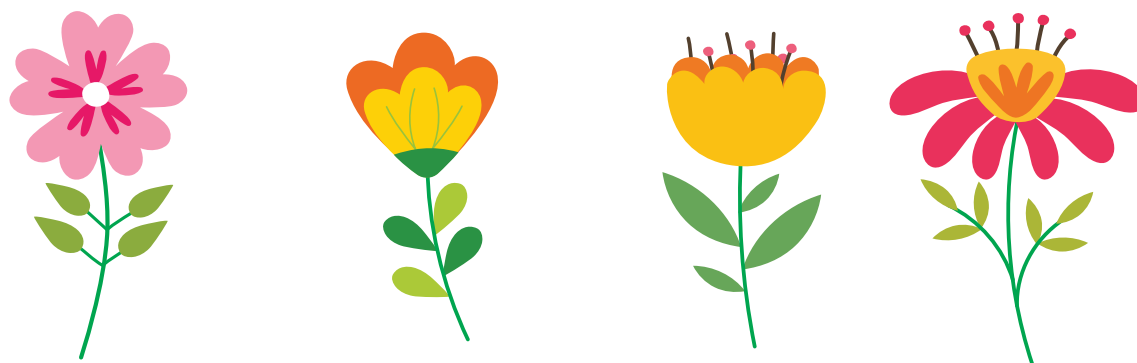
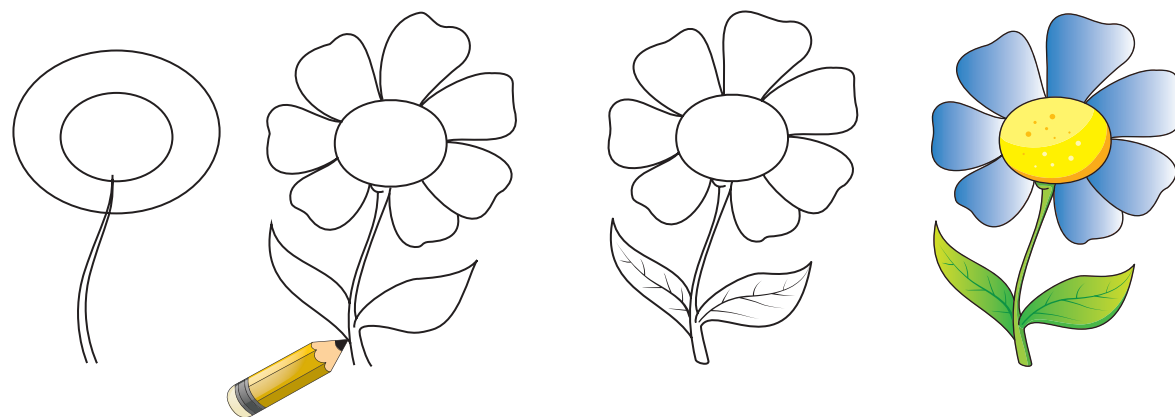
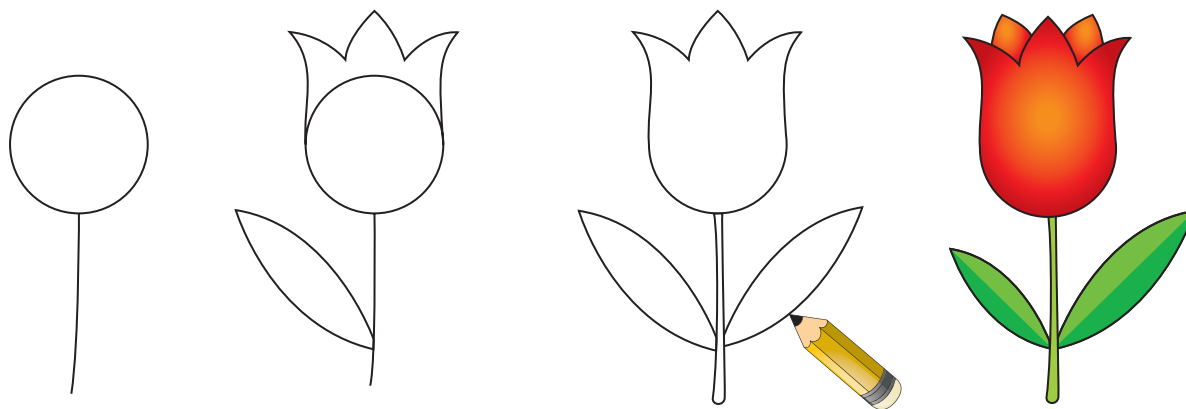


Shınıǵıw dápteriniń 11-betinde berilgen súwretti boyañ.



## Reñ hám gúller

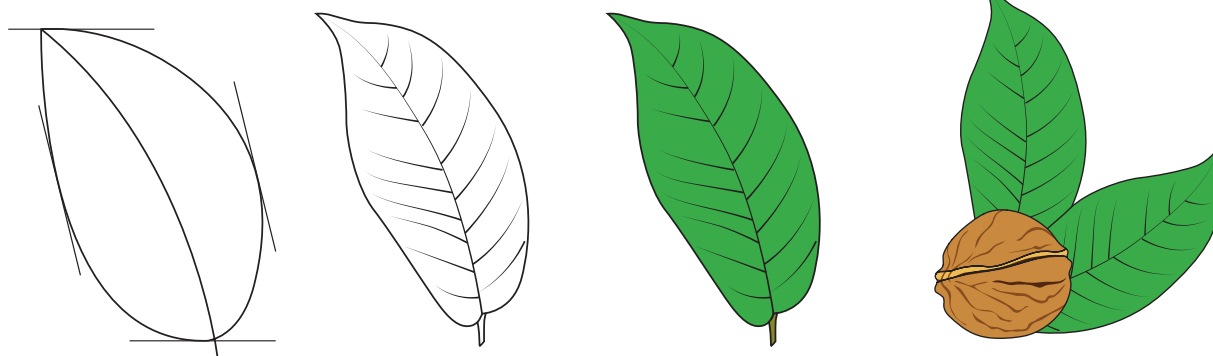
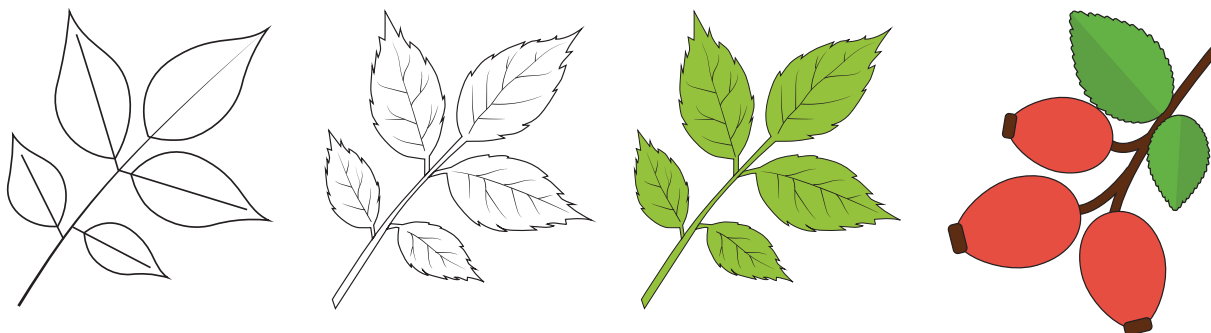
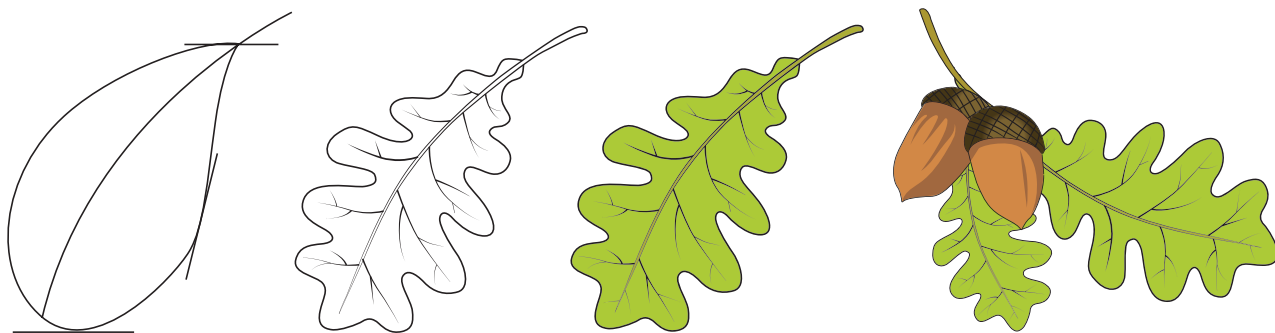
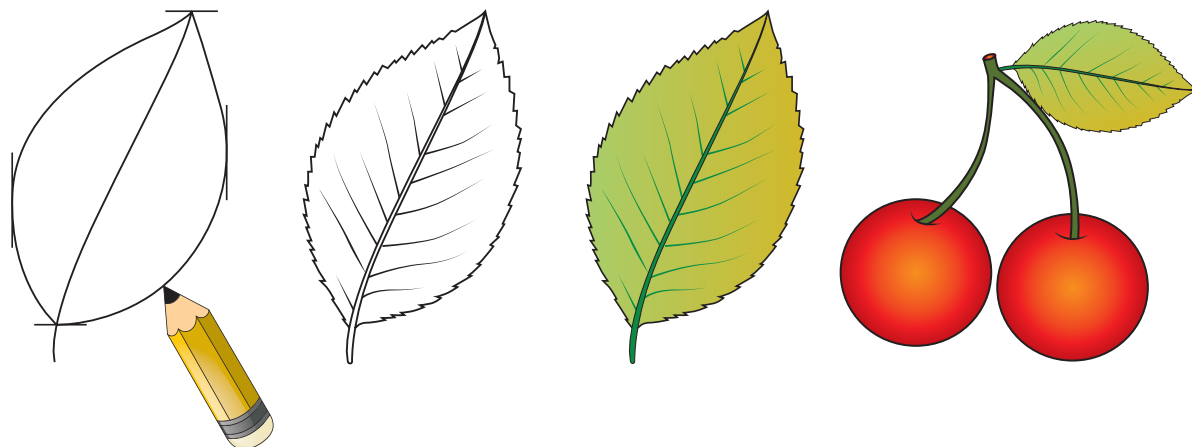




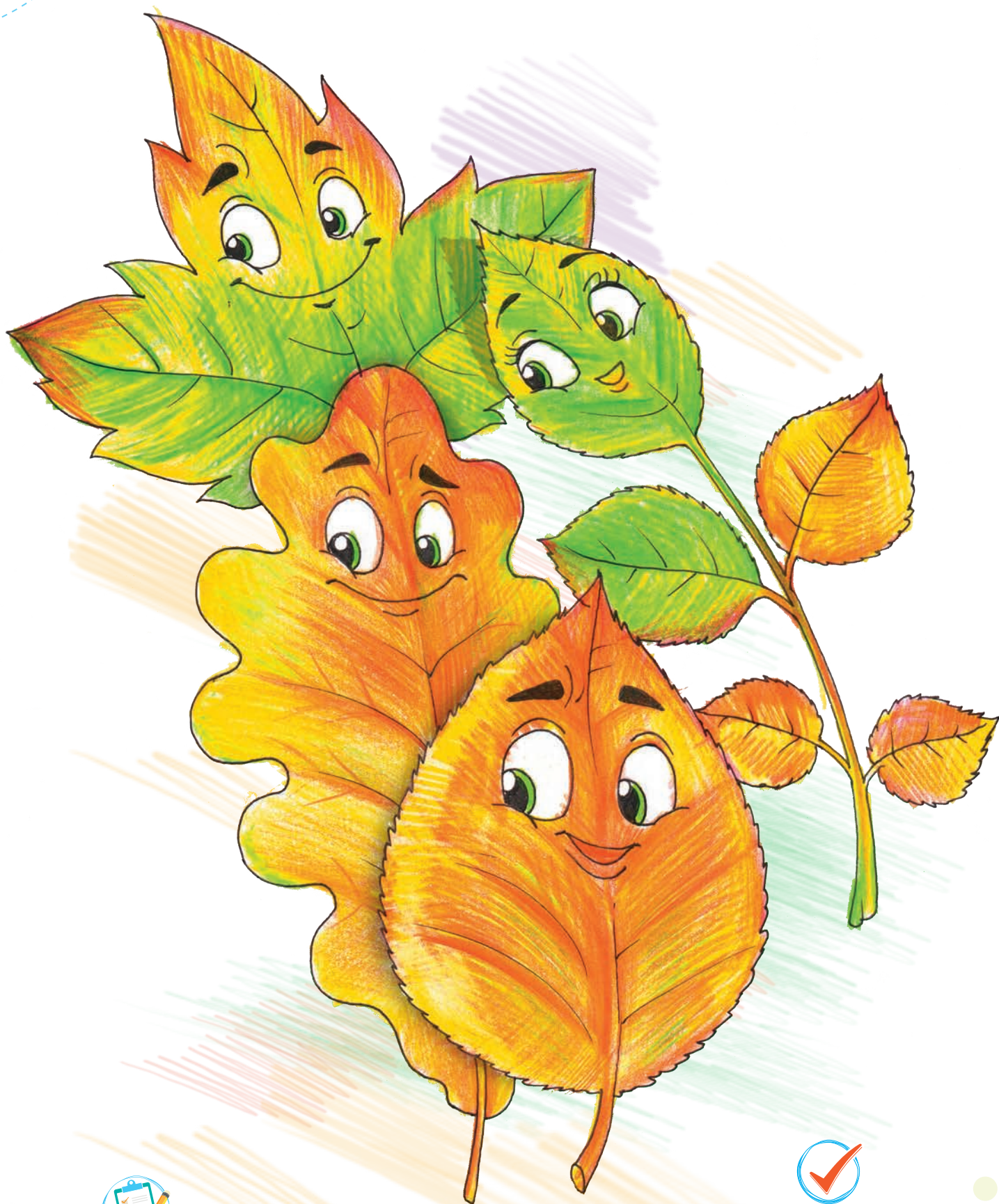
Shiníqiw dápteriniń 13-betine sabaqlıqta berilgen gúl úlgilerinen birin salıń.



## Жазирақлардиң сўвретин салыў



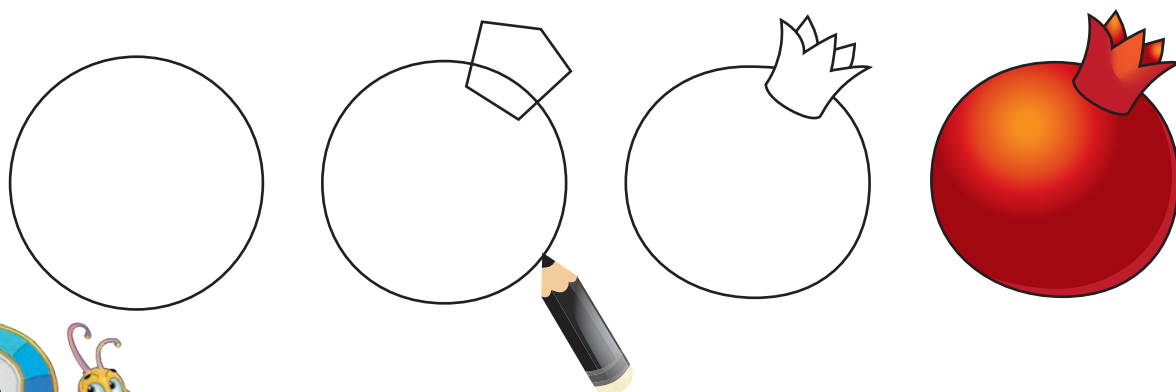
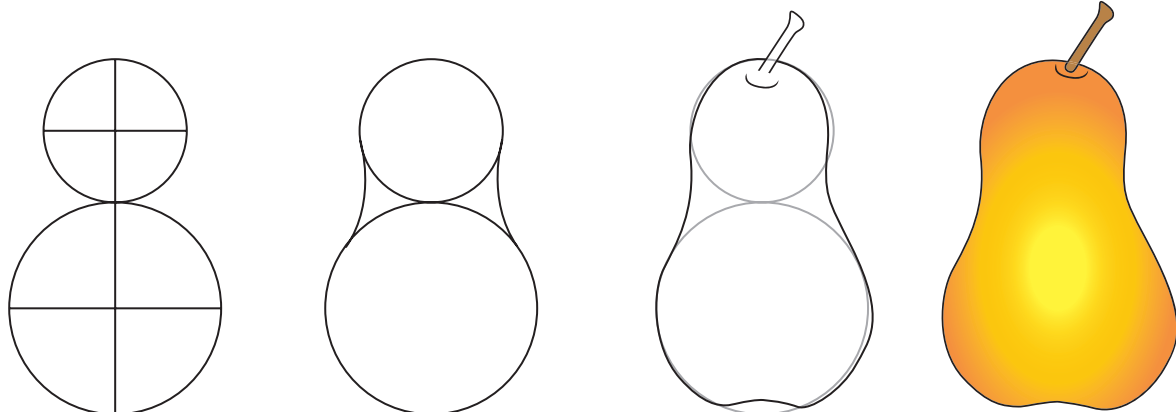
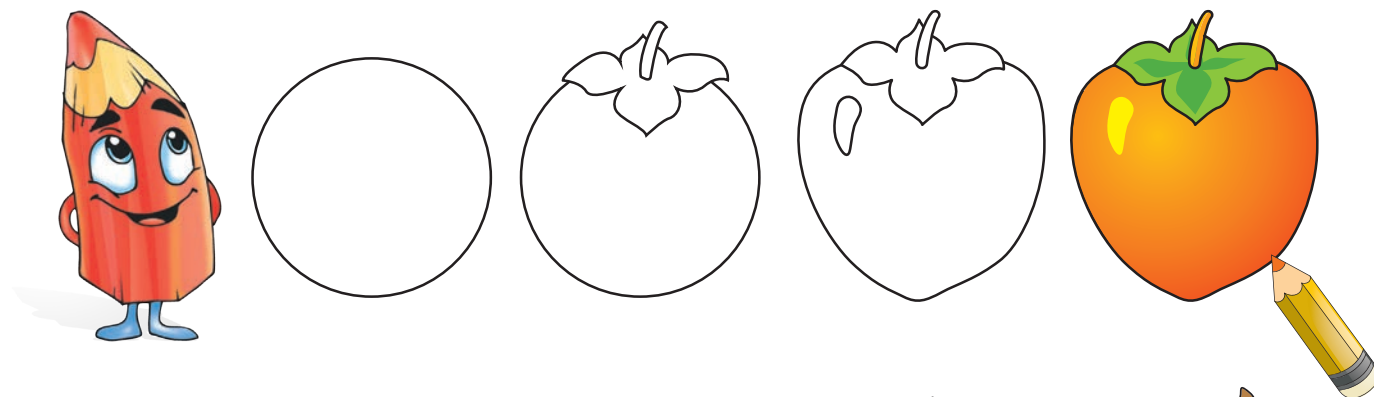
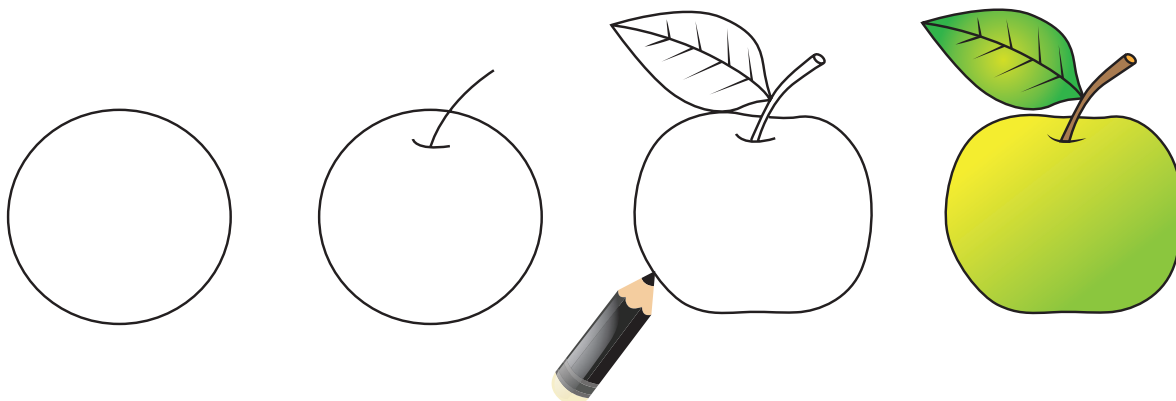




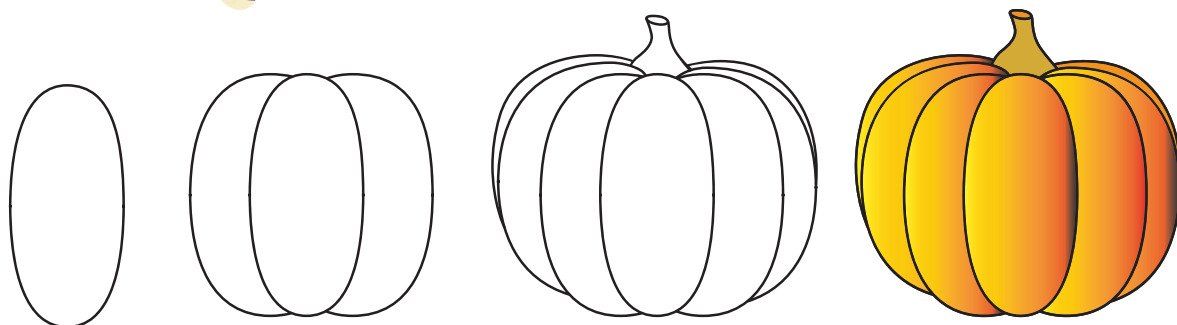
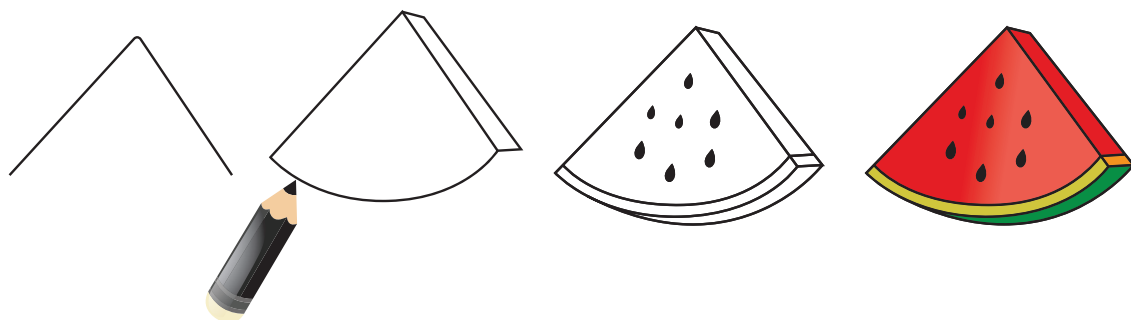
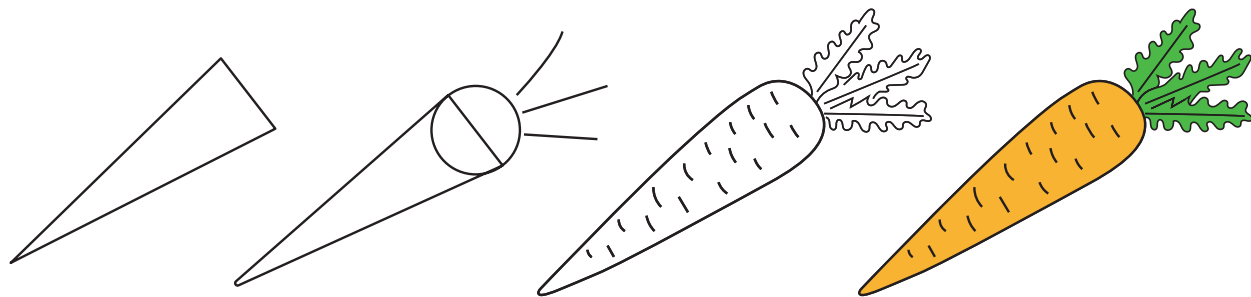
Shiniqiw dápteriniń 15-betine  
japiraqlardıń súwretin salıń.



## «Gúz jemisleri» temasında súwret salıw









Shınıǵıw dápteriniń 17-betine miywe  
hám palızlardıń súwretin salıń.



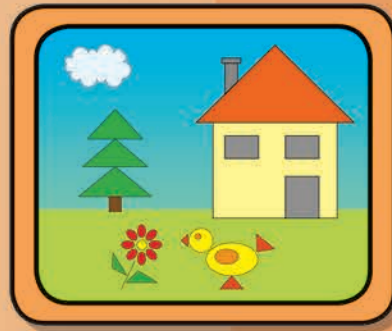
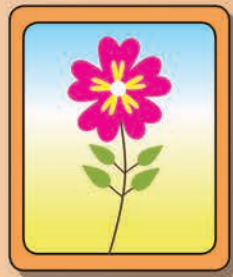
## «Kirpitiken bağda» temasında súwret salıw





Shinig'iw dápteriniń 19-betindegi súwretti tamamlań hám boyañ.



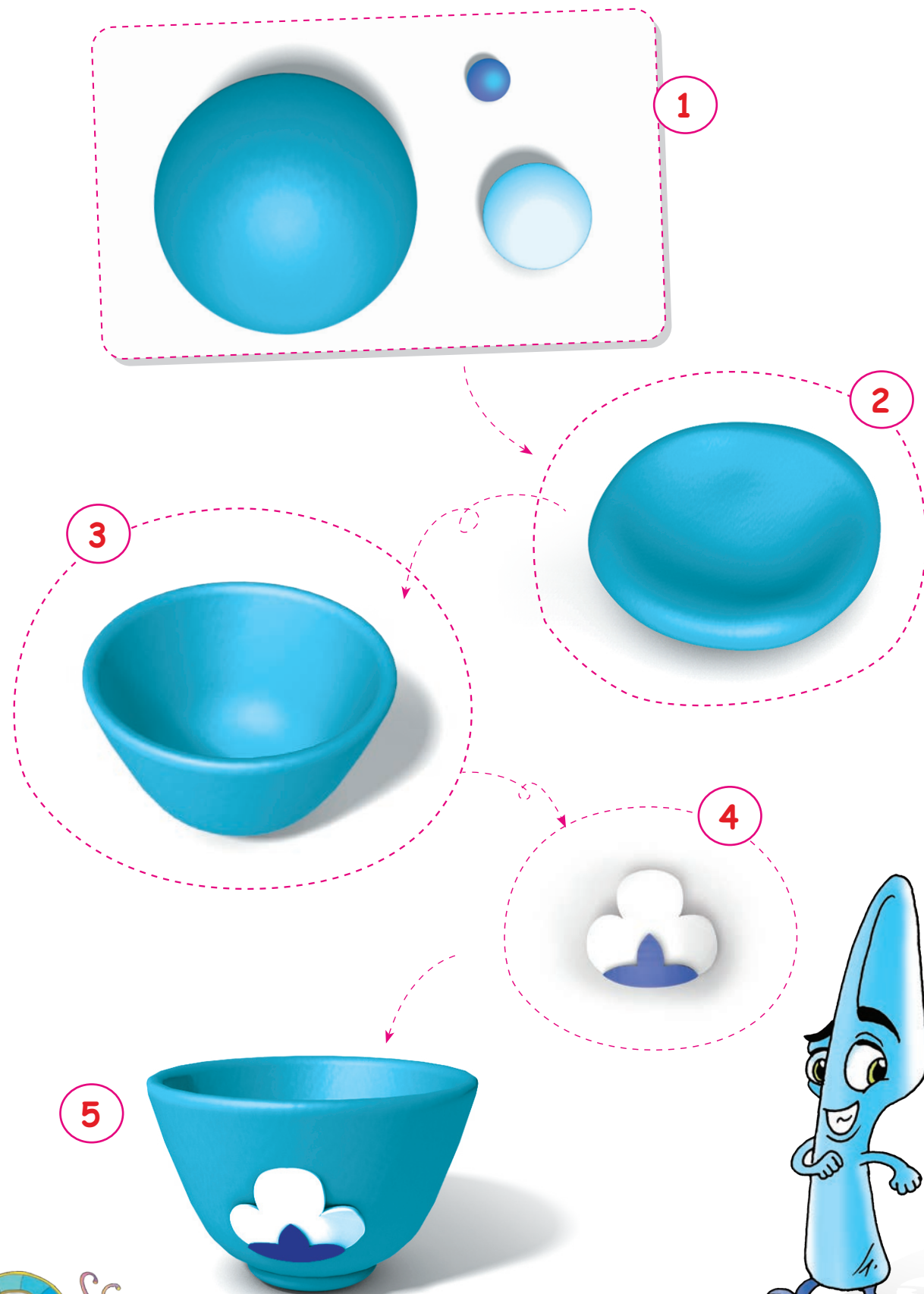


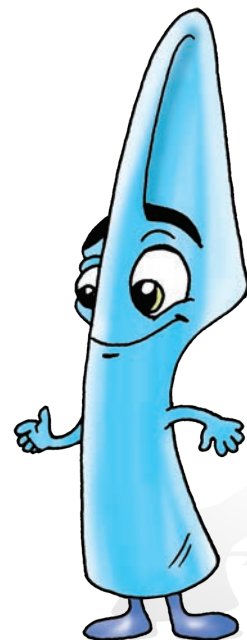
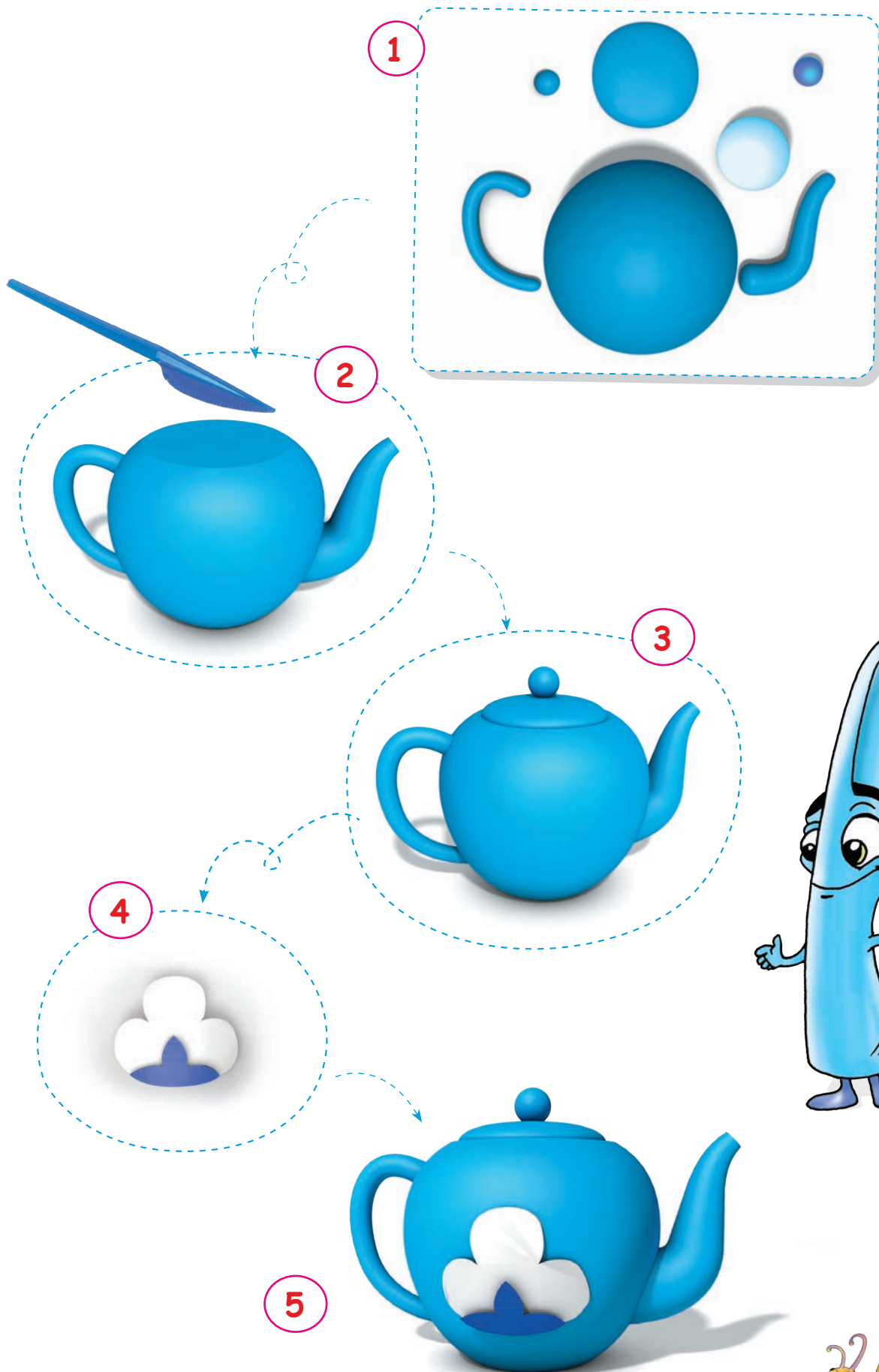


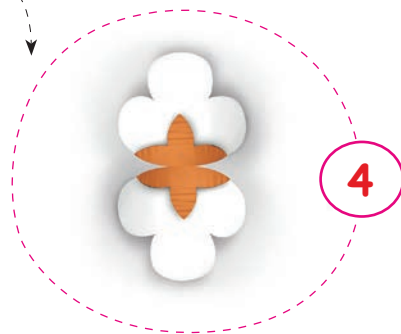
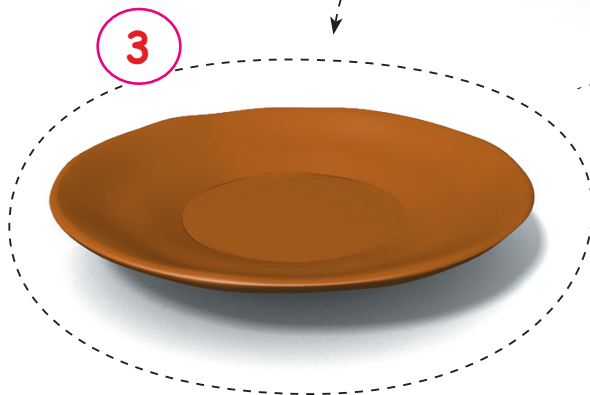
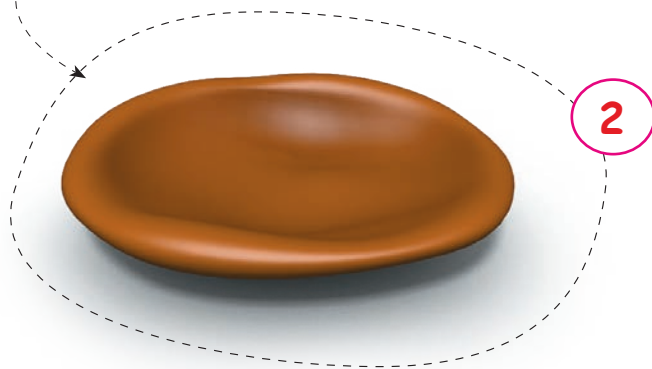
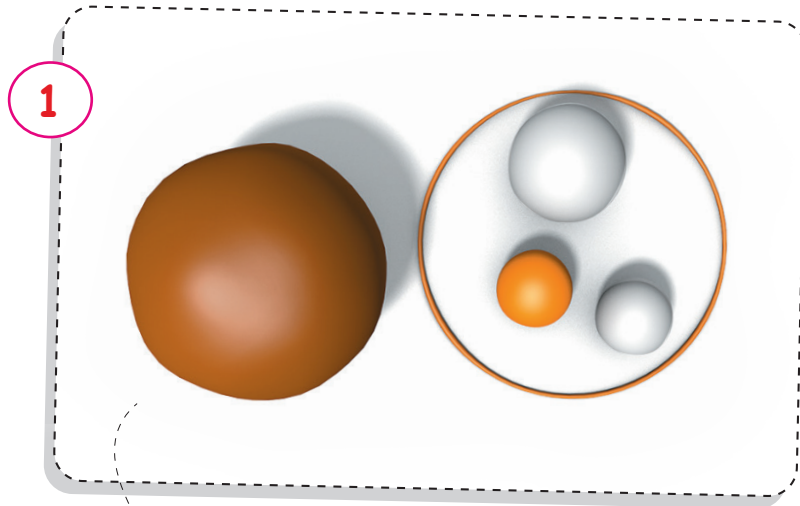
# MÚSINSHILIK

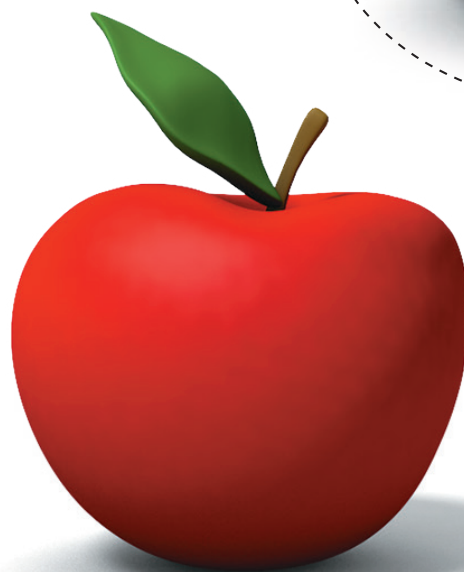
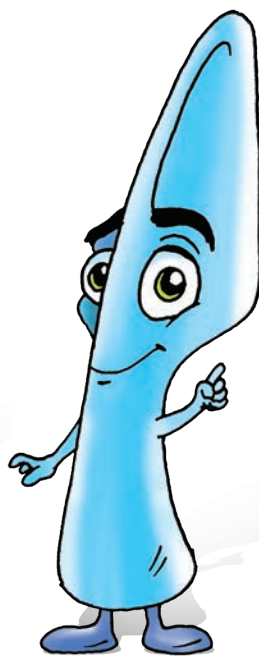
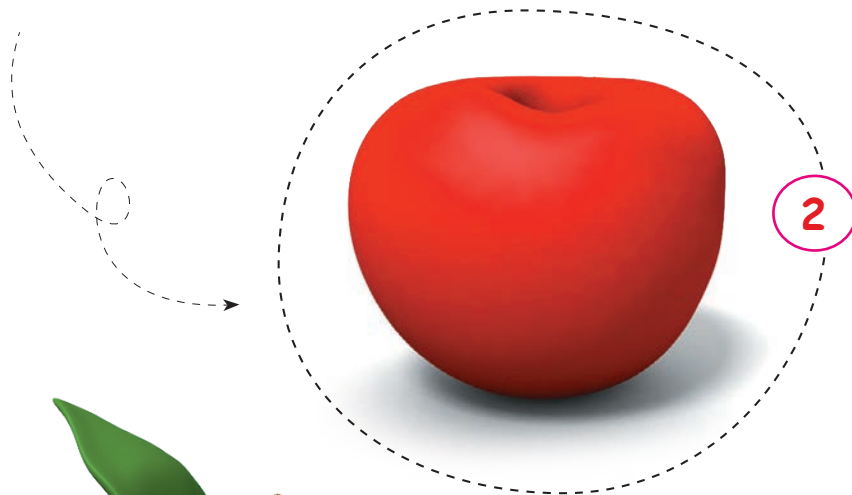
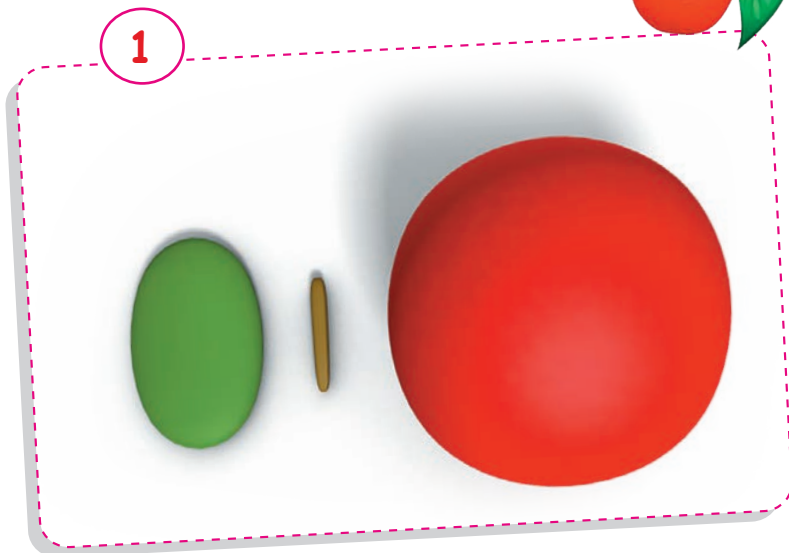
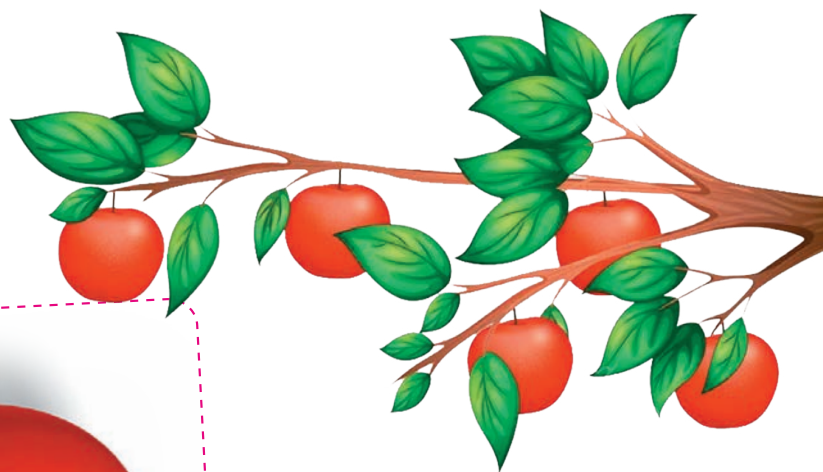


## Milliy idis hám miyweler islew



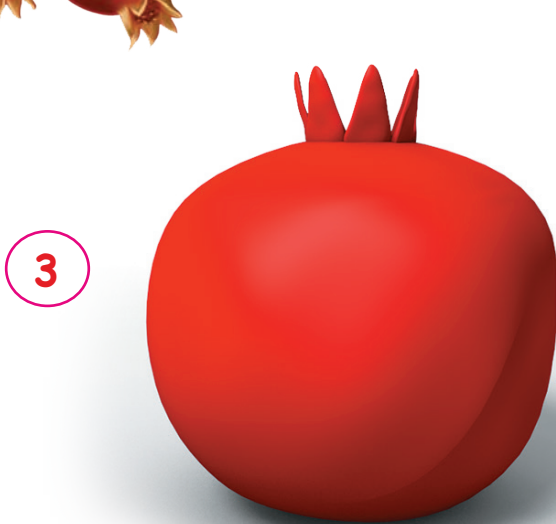
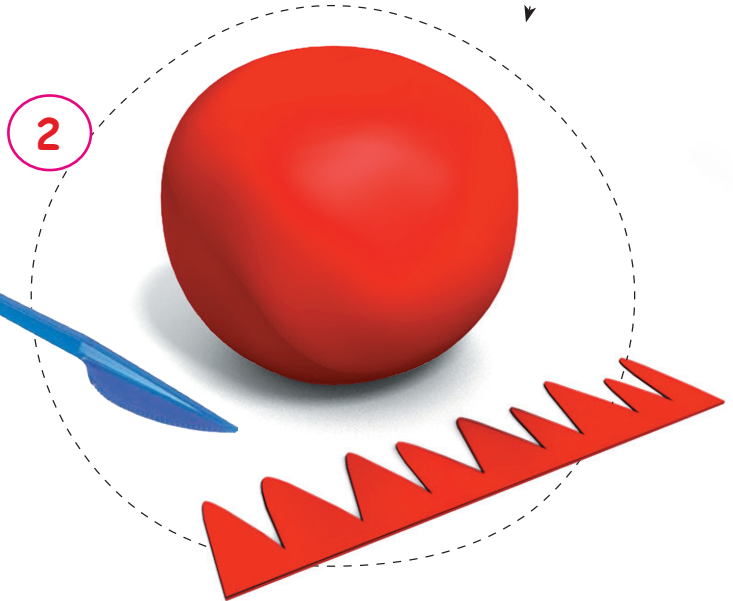
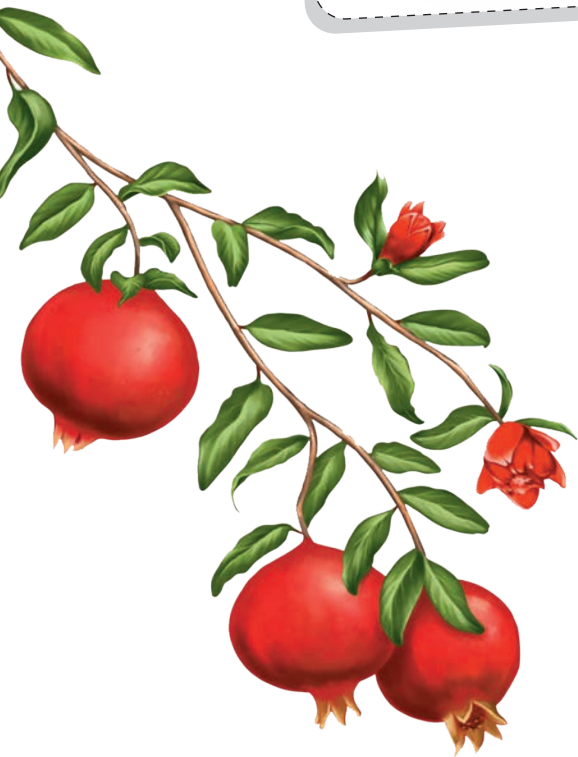
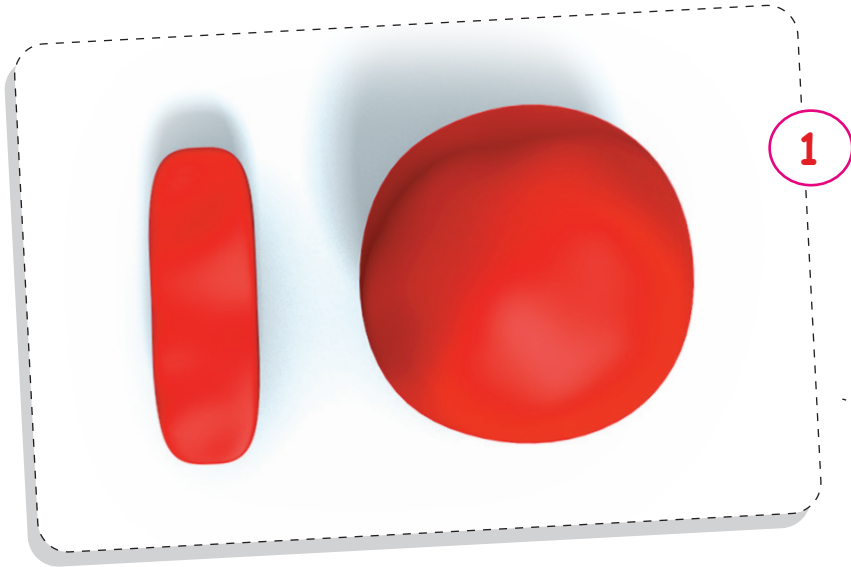




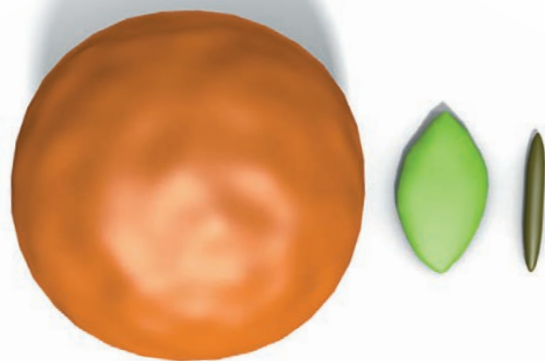


3

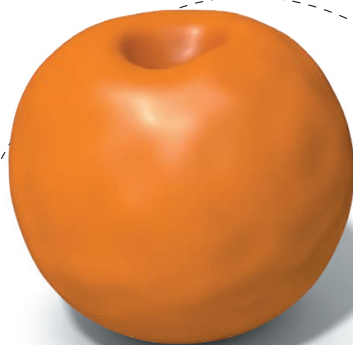




1



2



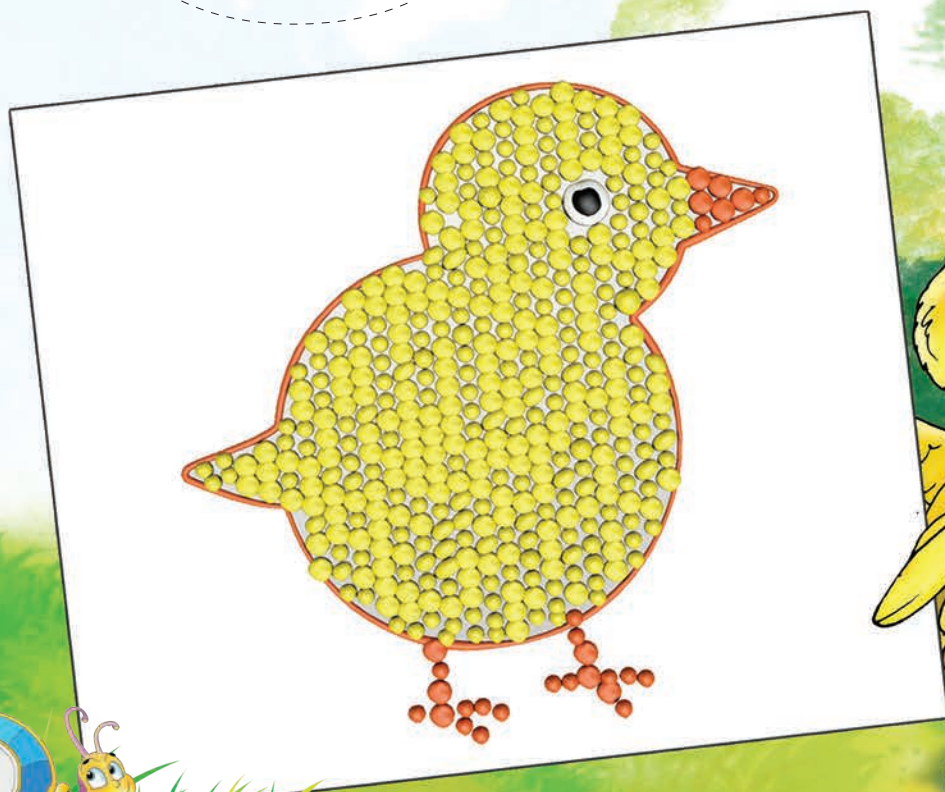
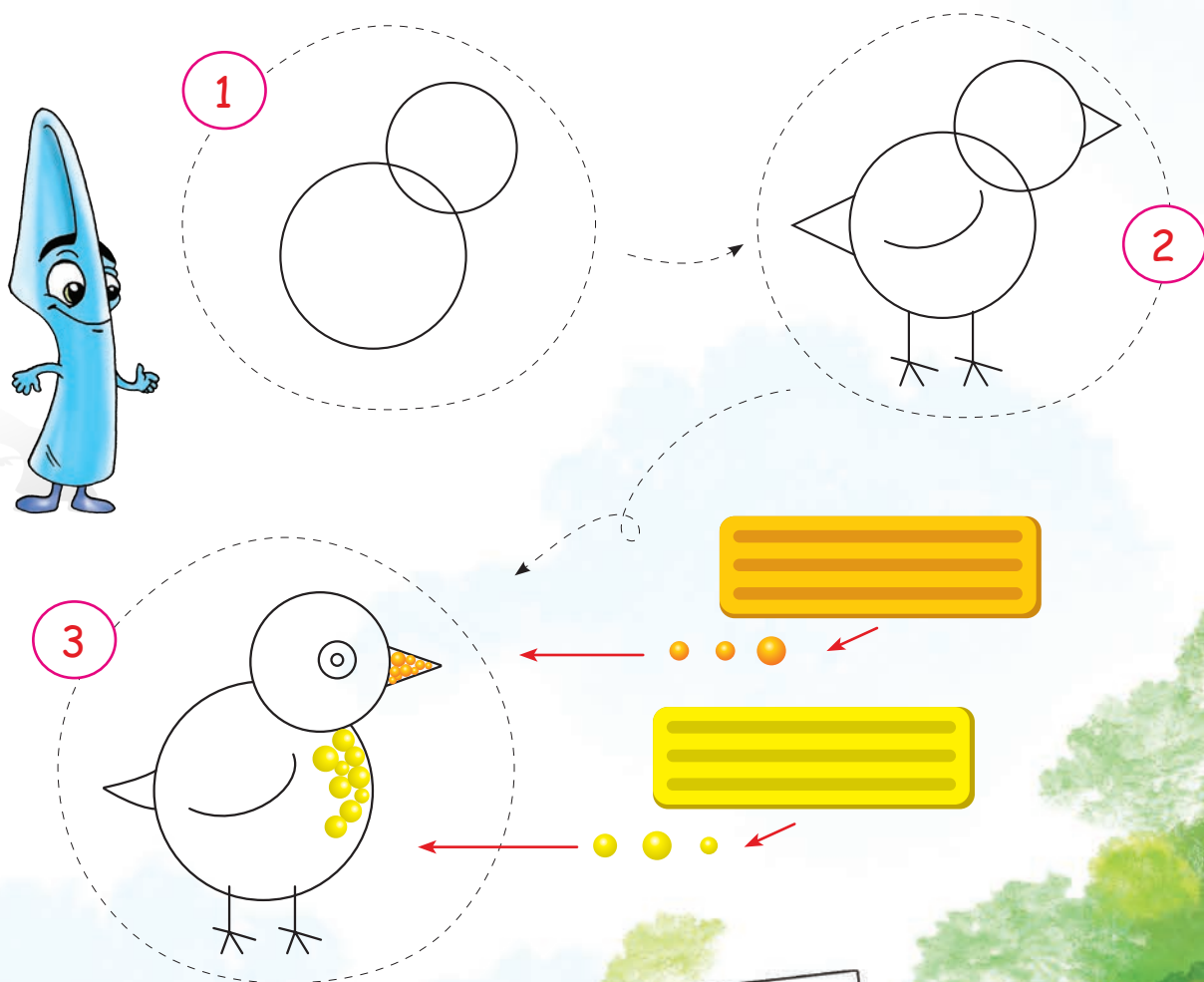
3



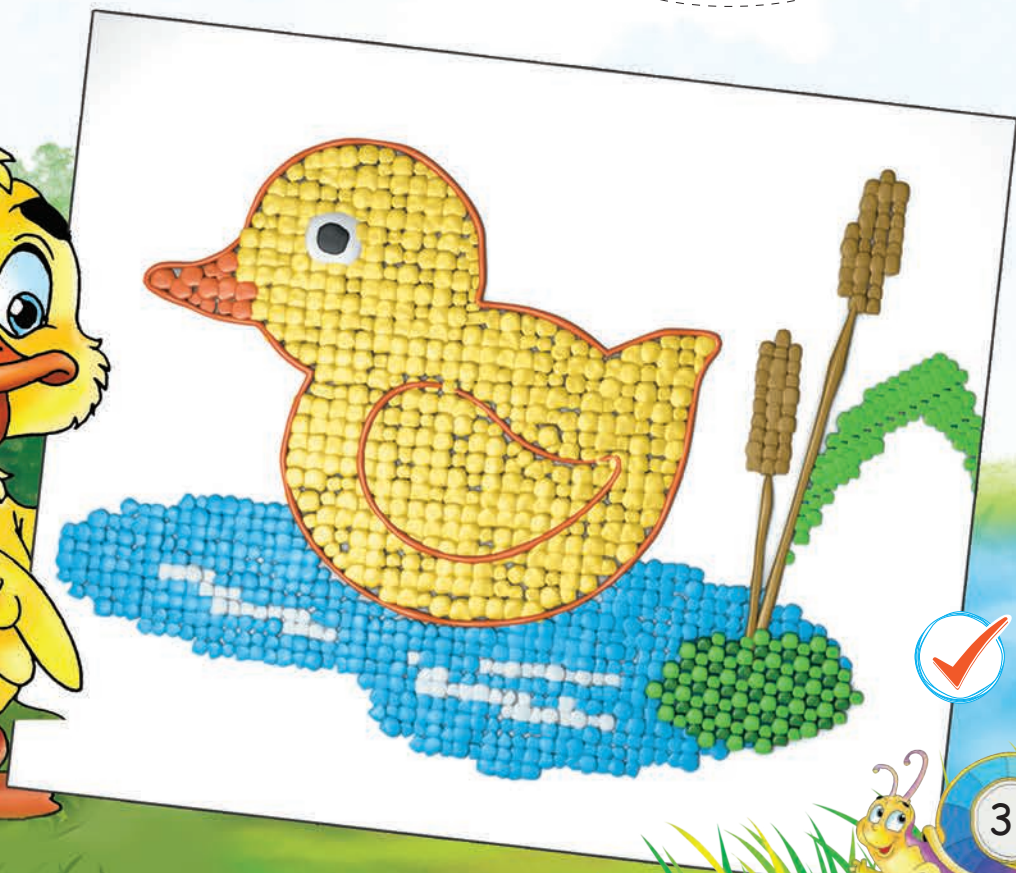
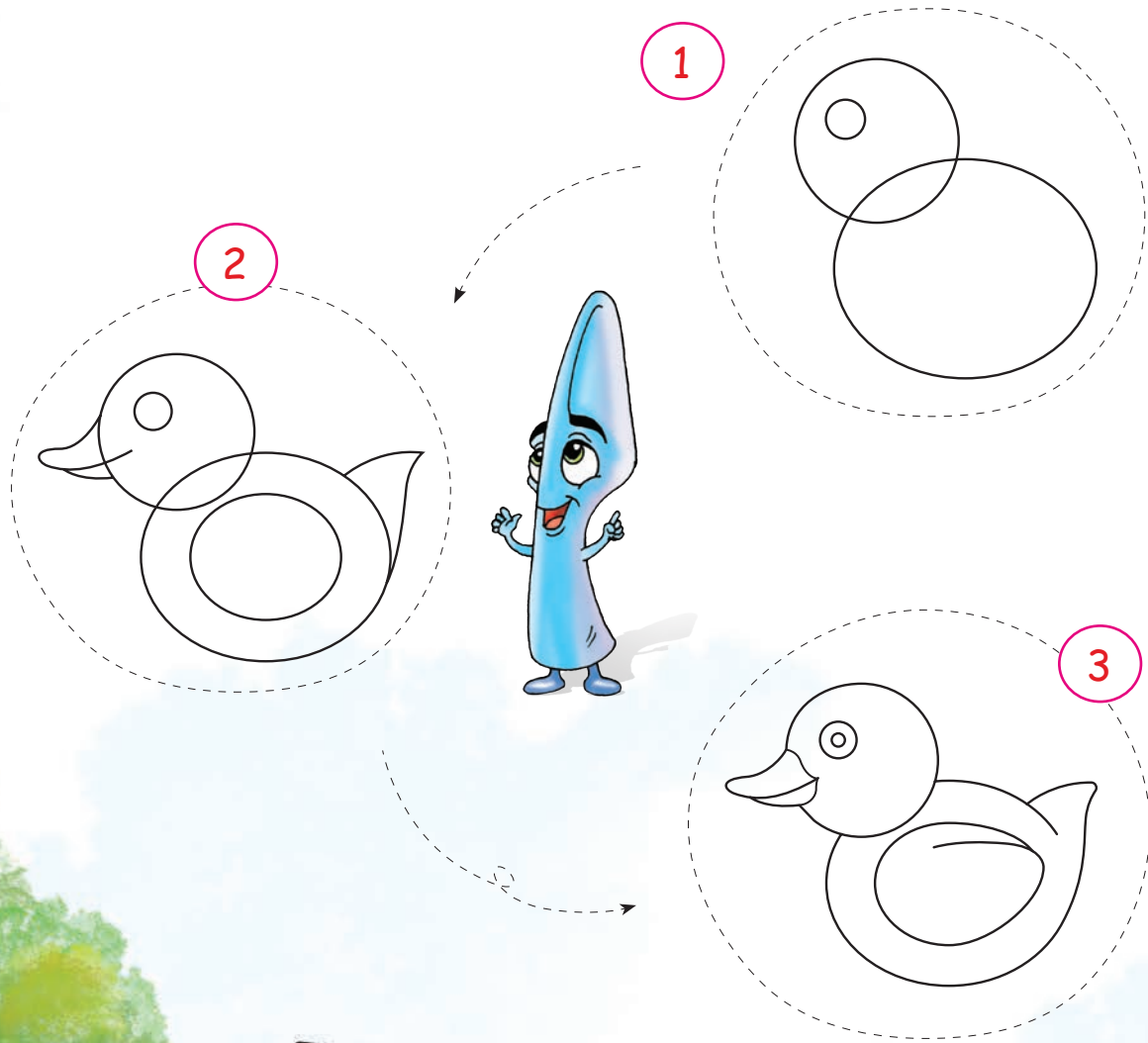
Milliy idis hám miywelerden birin isleń.

31

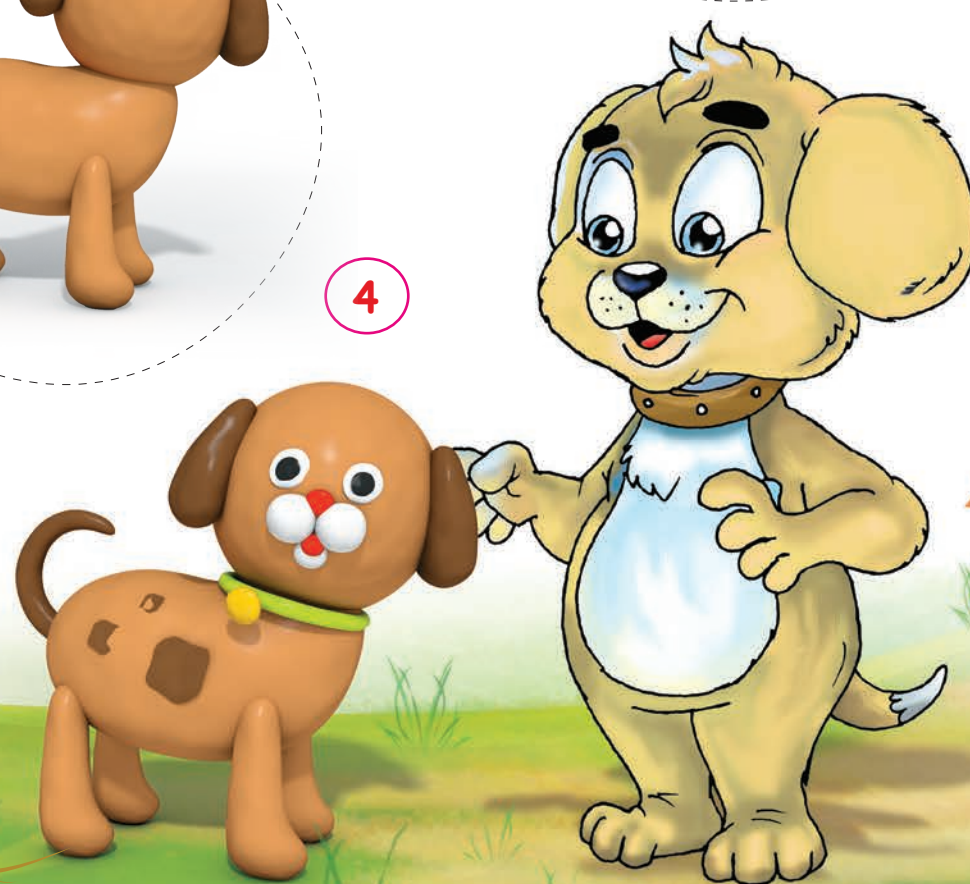
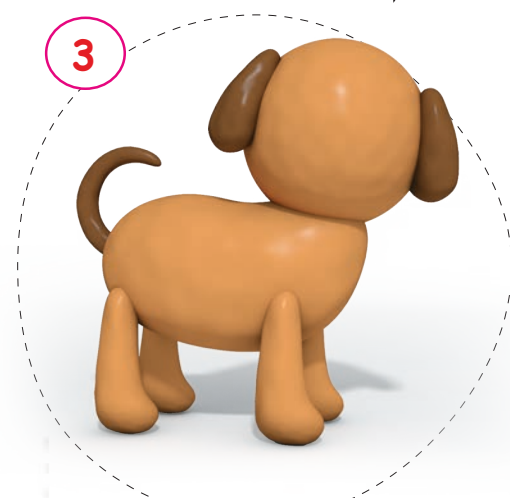
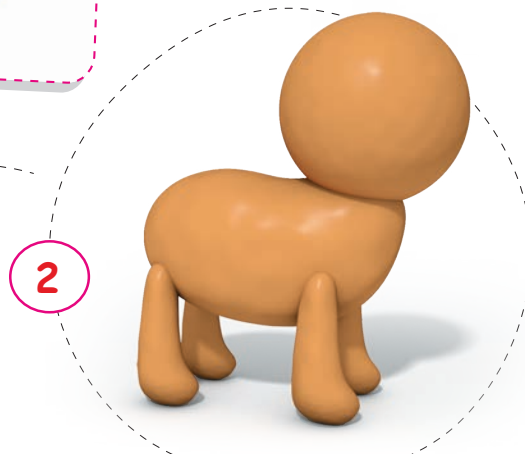
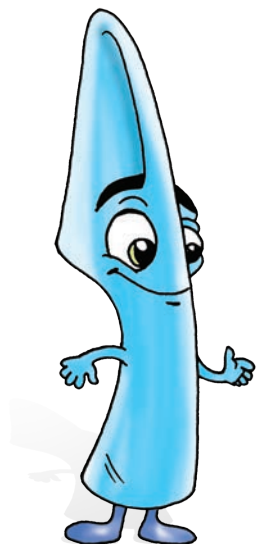
# Shóje menen úyrektiń palapanın islew.

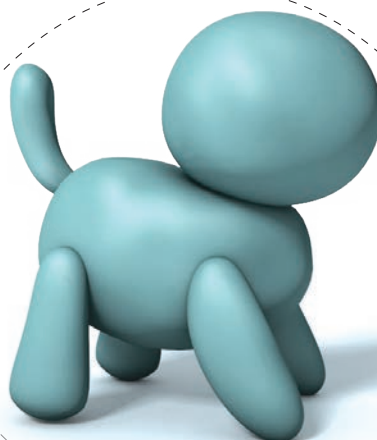
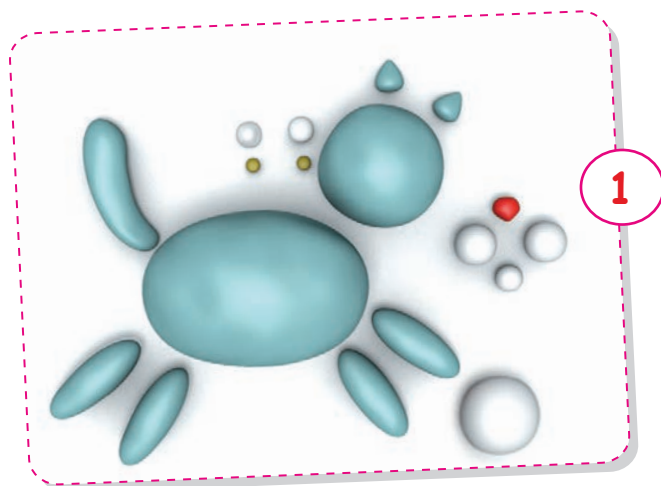






## Kúshik penen pishiqtiń balasınıń formasını islew





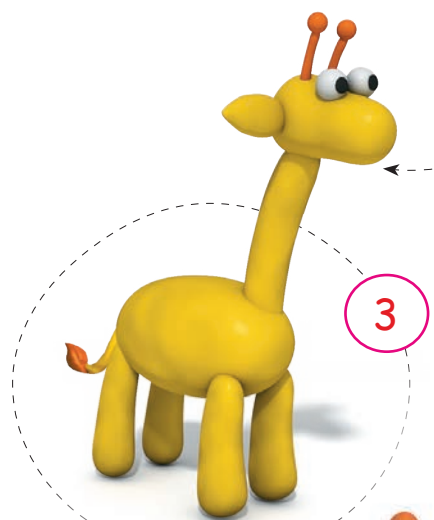
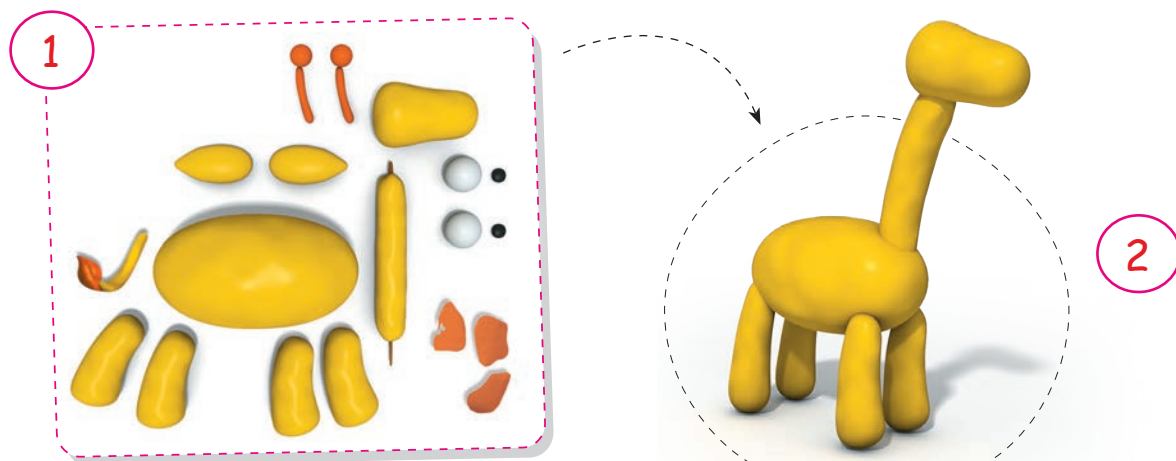
## Shabaqtiń súwretin islew

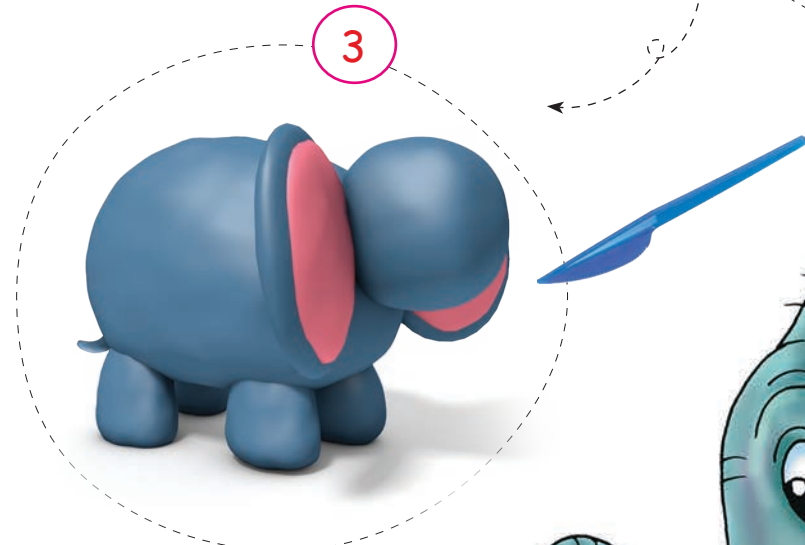
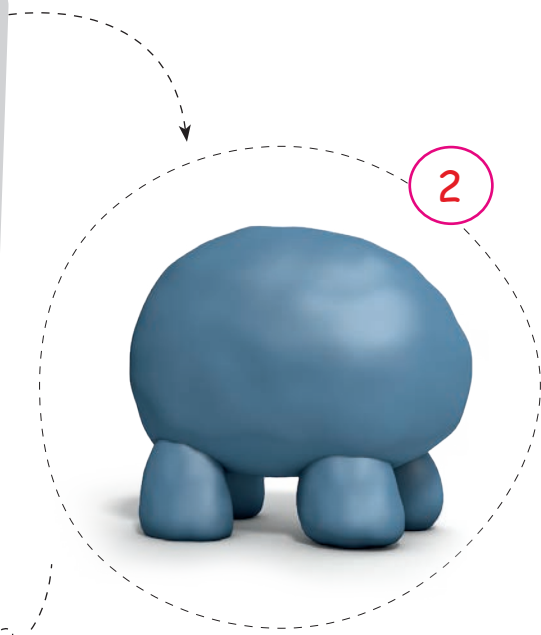
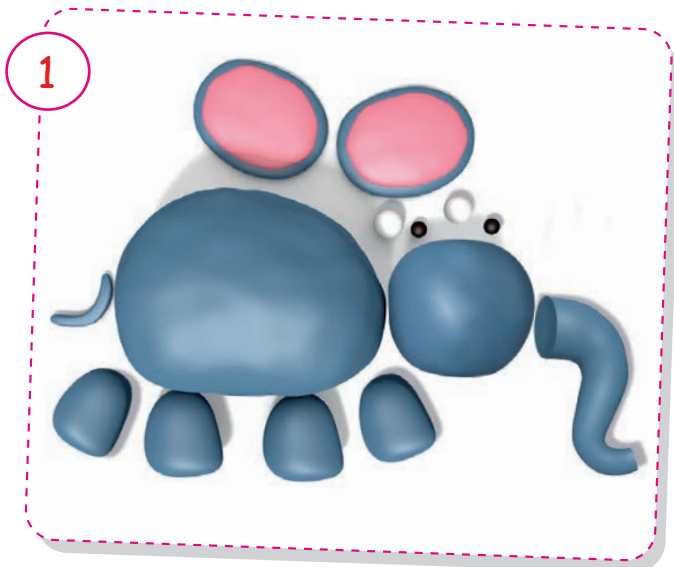


36

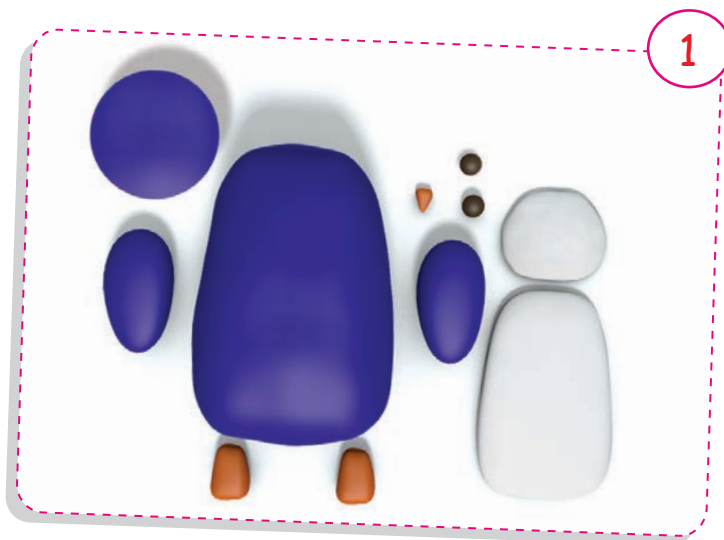


## Jiraf hám pil formasın islew





## Pingvin formasin so'g'iw



J A Ń A J İ L

(Uliwmalastırıwshı sabaq)



Shınıǵıw dápteriniń 21-betinde berilgen súwretti sanlar arqalı boyañ.





# REŃLI SÚWRET

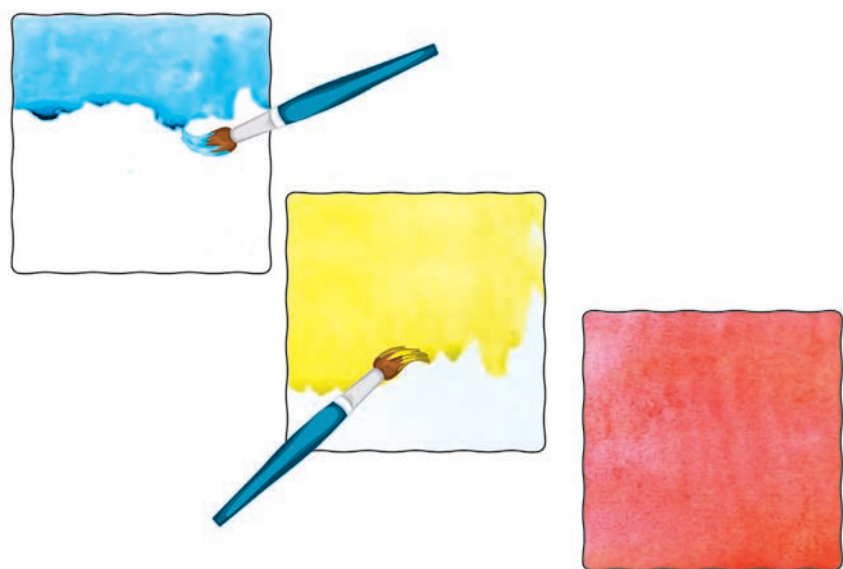
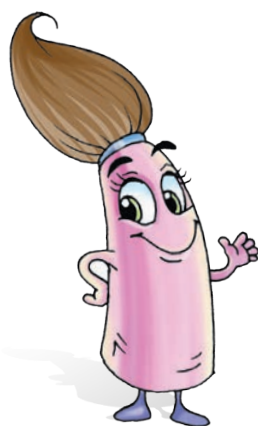


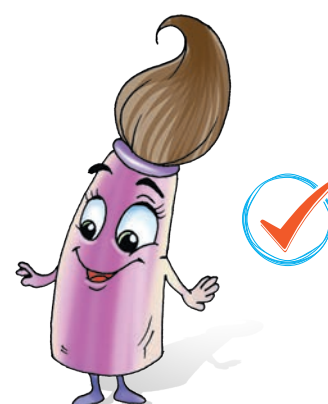
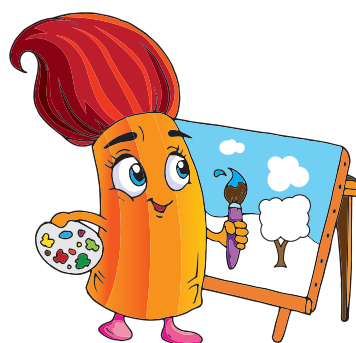
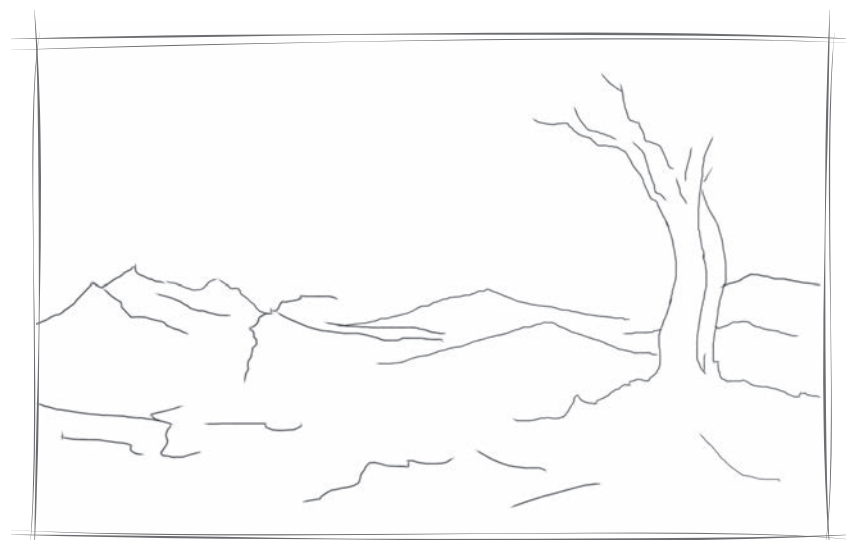
## «Qis kórinisi» temasında súwret salıw

### Jumis ornın durıs shólkemlestiriw



### Akvarel boyawı menen islew usılı

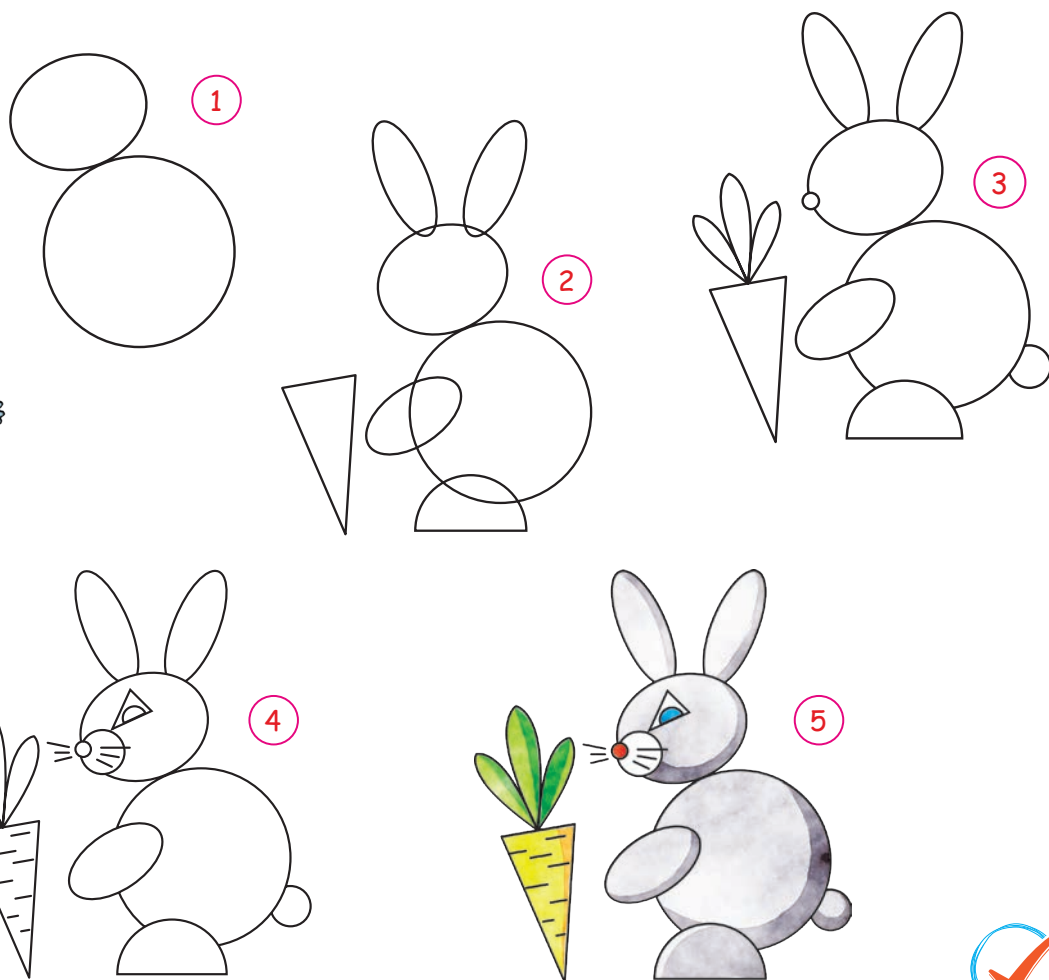
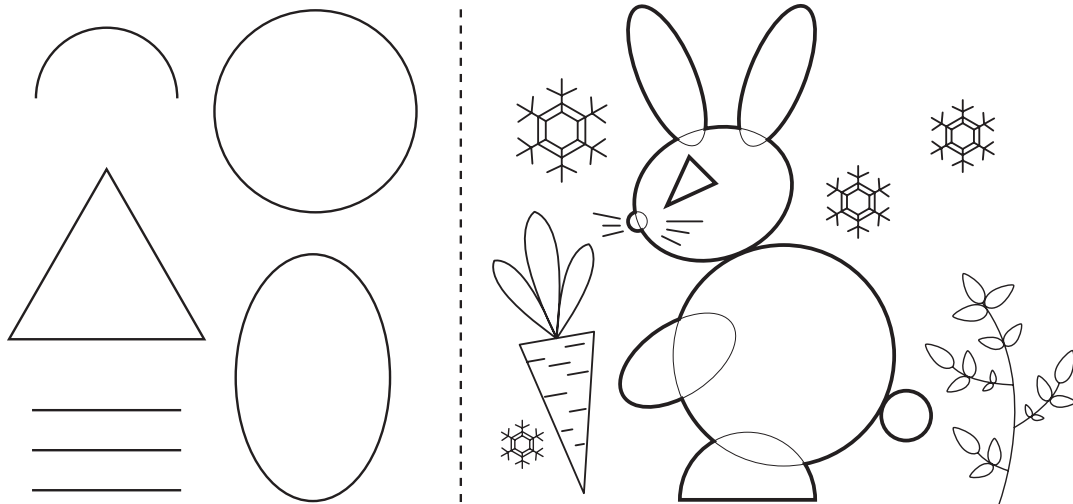




Shınıǵıw dápteriniń 23-betine «Qıs kórinisi» temasında súwret salıń



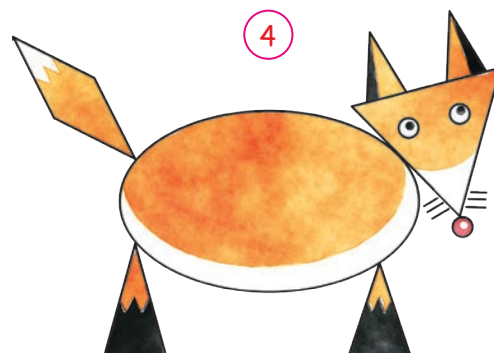
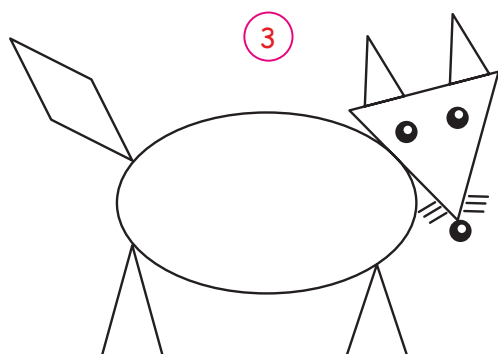
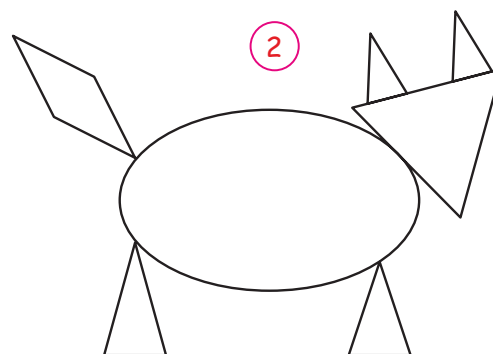
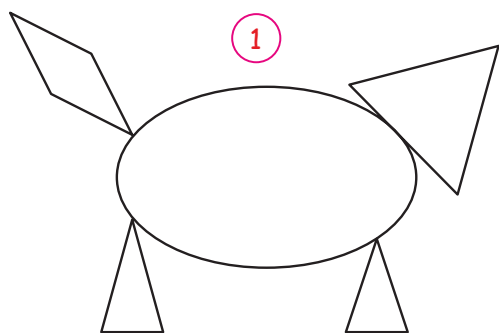
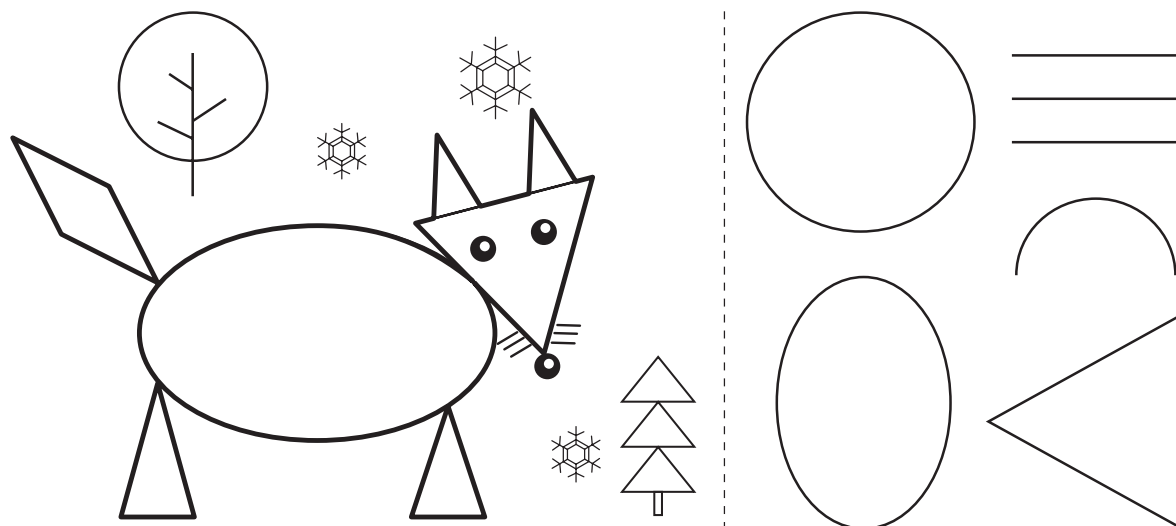
## Gójektin súwretin salıw



Shınıǵıw dápteriniń 25-betinde berilgen súwretti tamamlań hám boyañ.



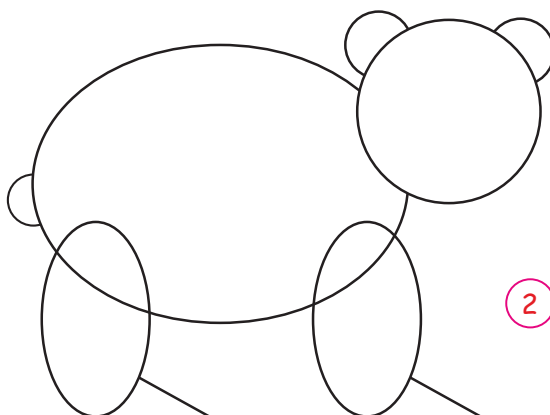
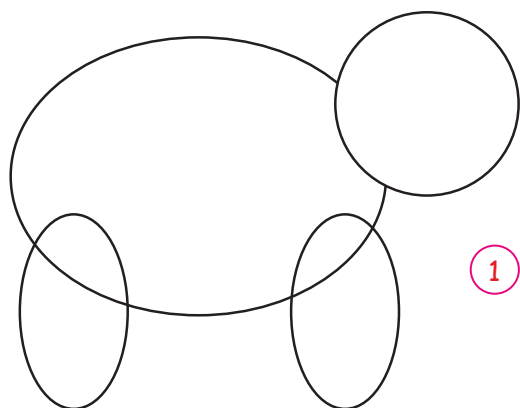
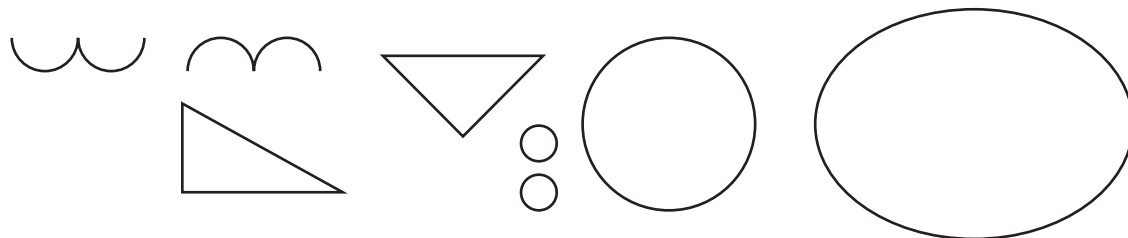
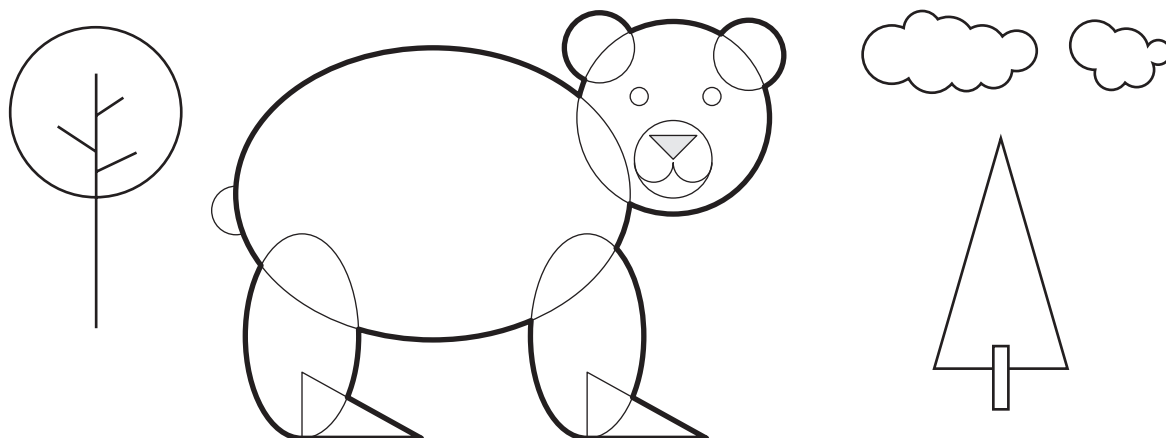
## Túlkiniń súwretin salıw

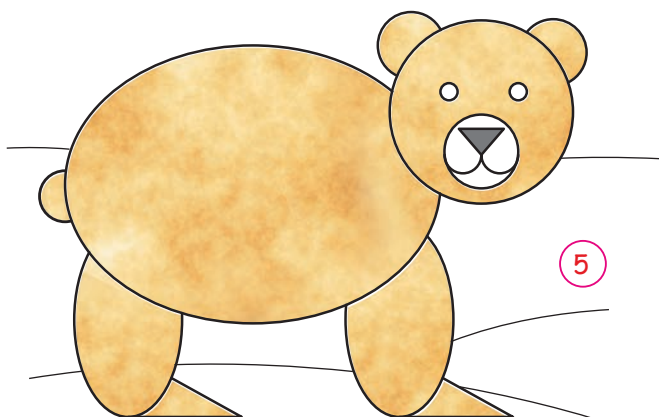
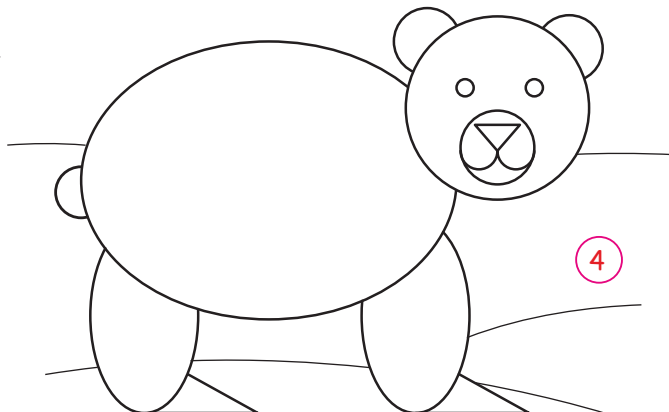
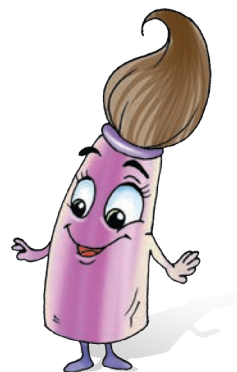
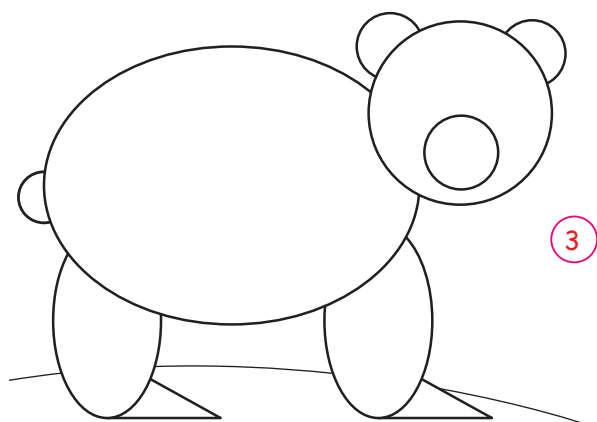


Shınıǵıw dápteriniń 27-betinde berilgen súwretti tamamlań hám boyañ.



## Айўдин баласини сўретин сал

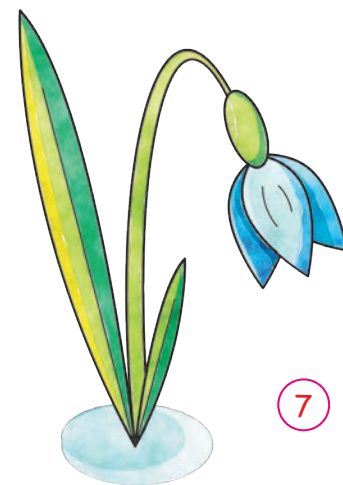
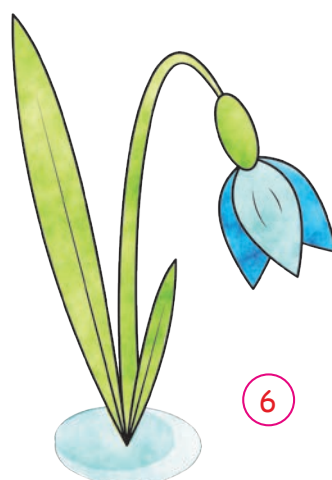
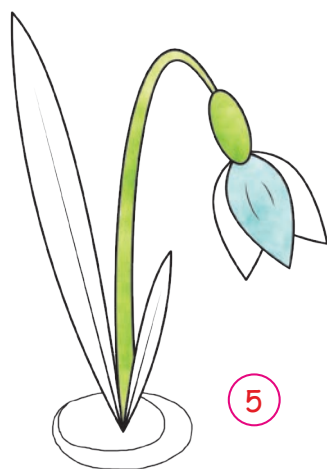
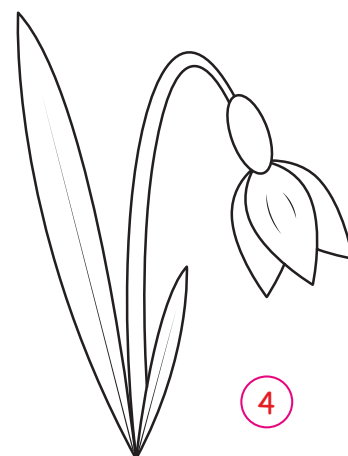
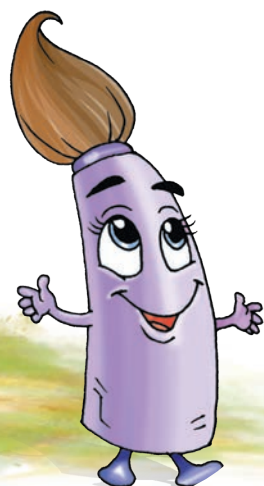
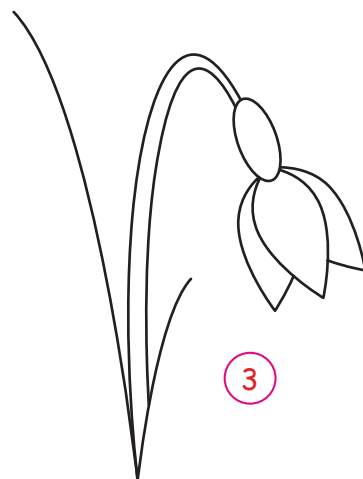
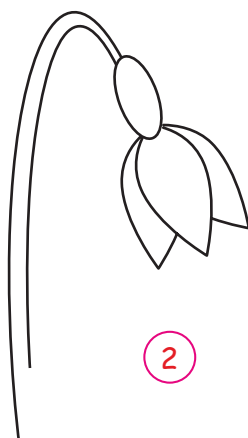
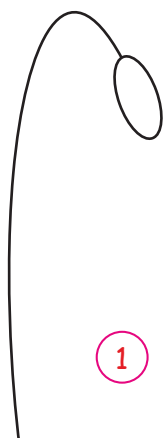




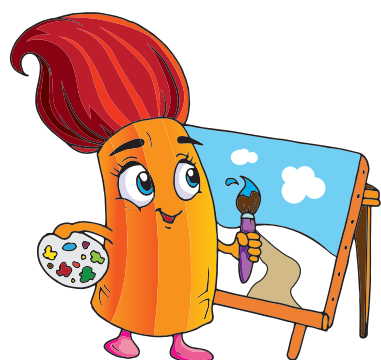
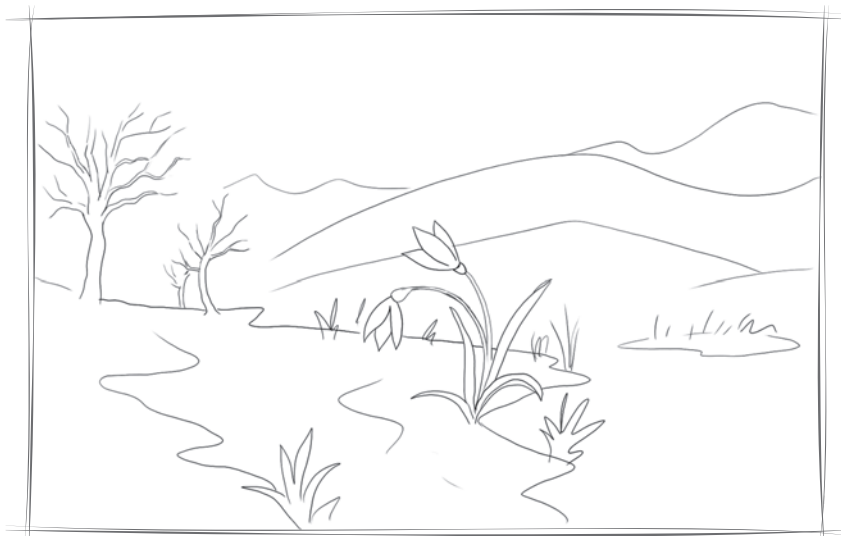
Shınıǵıw dápteriniń 29-betinde berilgen súwretti tamamlań hám boyañ.



## Baysheshek súwretin salıw



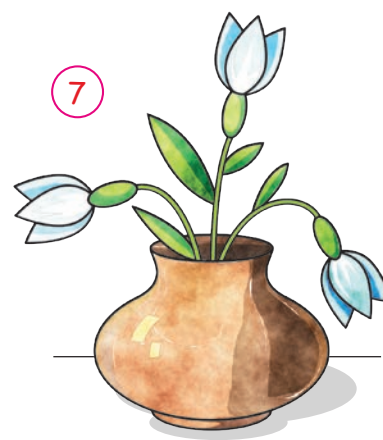
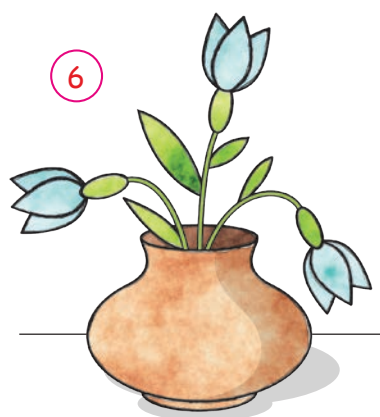
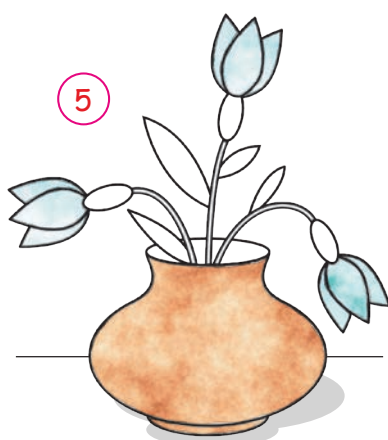
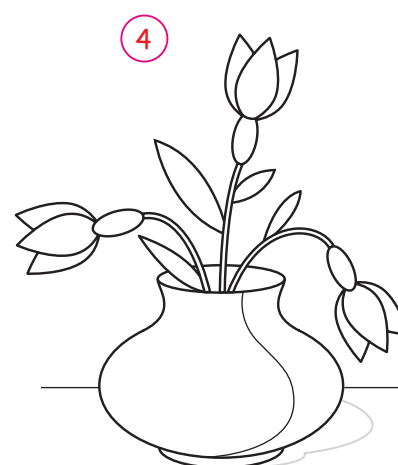
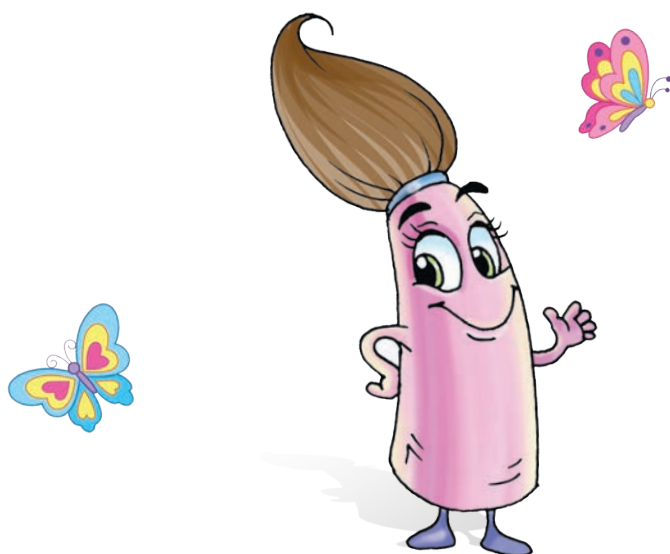
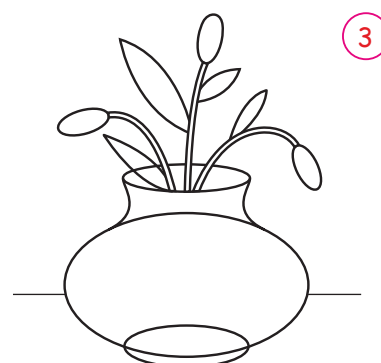
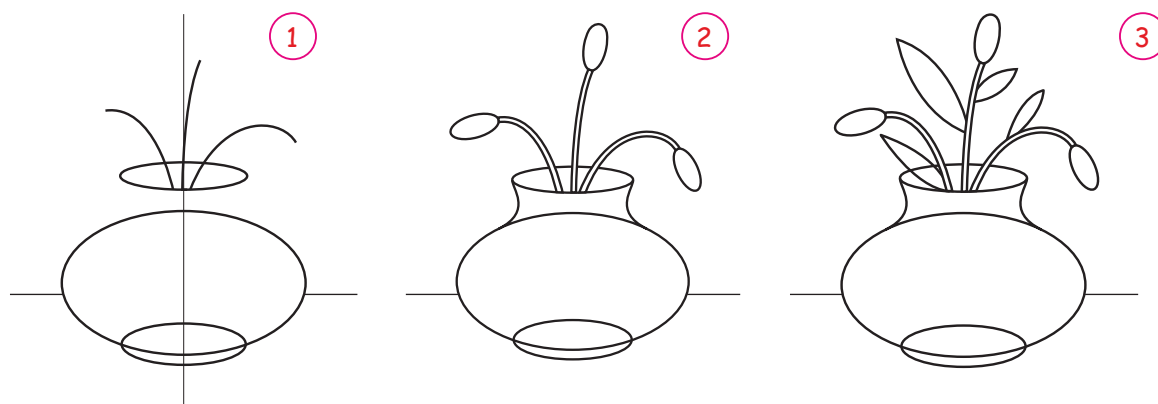




Shınıǵıw dápteriniń 31-betine baysheshek súwretin salıń.



## «Gúltúbektegi gúller» temasında súwret salıw

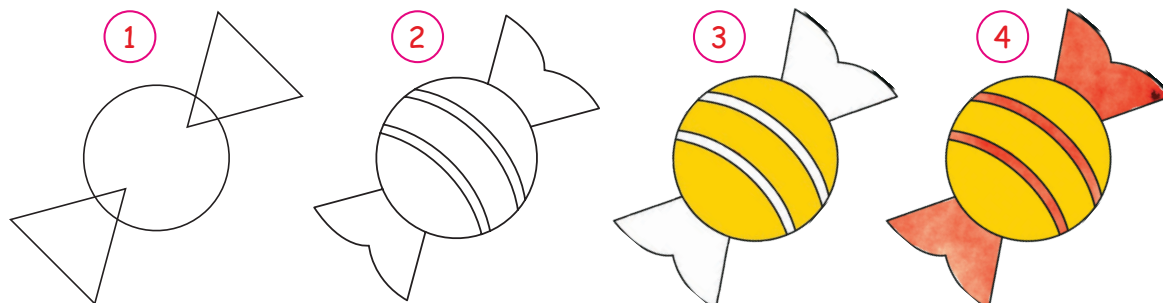
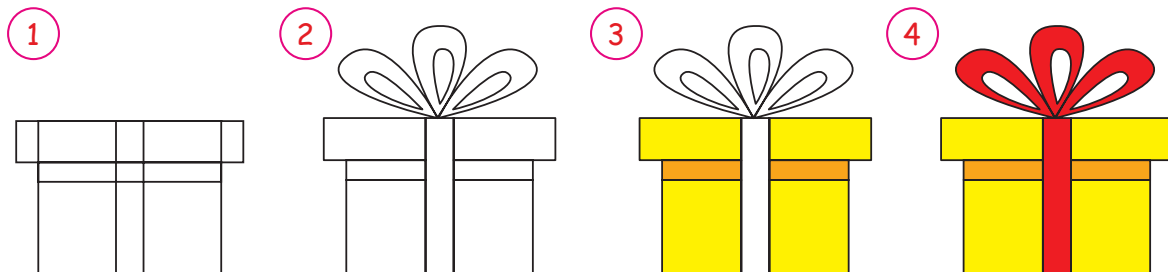


Shınıǵıw dápteriniń 33-betine «Gúltúbektegi gúller» temasında súwret salıń.



50

## «Anama sawǵa» temasında súwret salıw



Shınıǵıw dápteriniń 35-betindegi súwretti sanlar arqalı boyañ.



## 1-baqlaw jumisi. «Gúldáste» temasında súwret salıw



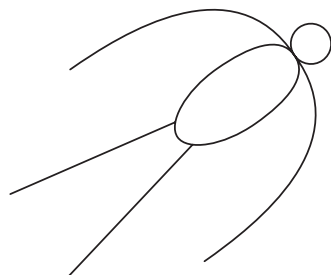
Shınıǵıw dápteriniń 37-betinde «Gúldáste» temasında súwret salıw.



52

## «Ўlkemizde Nawrız» temasında súwret salıw

1



2



3



4



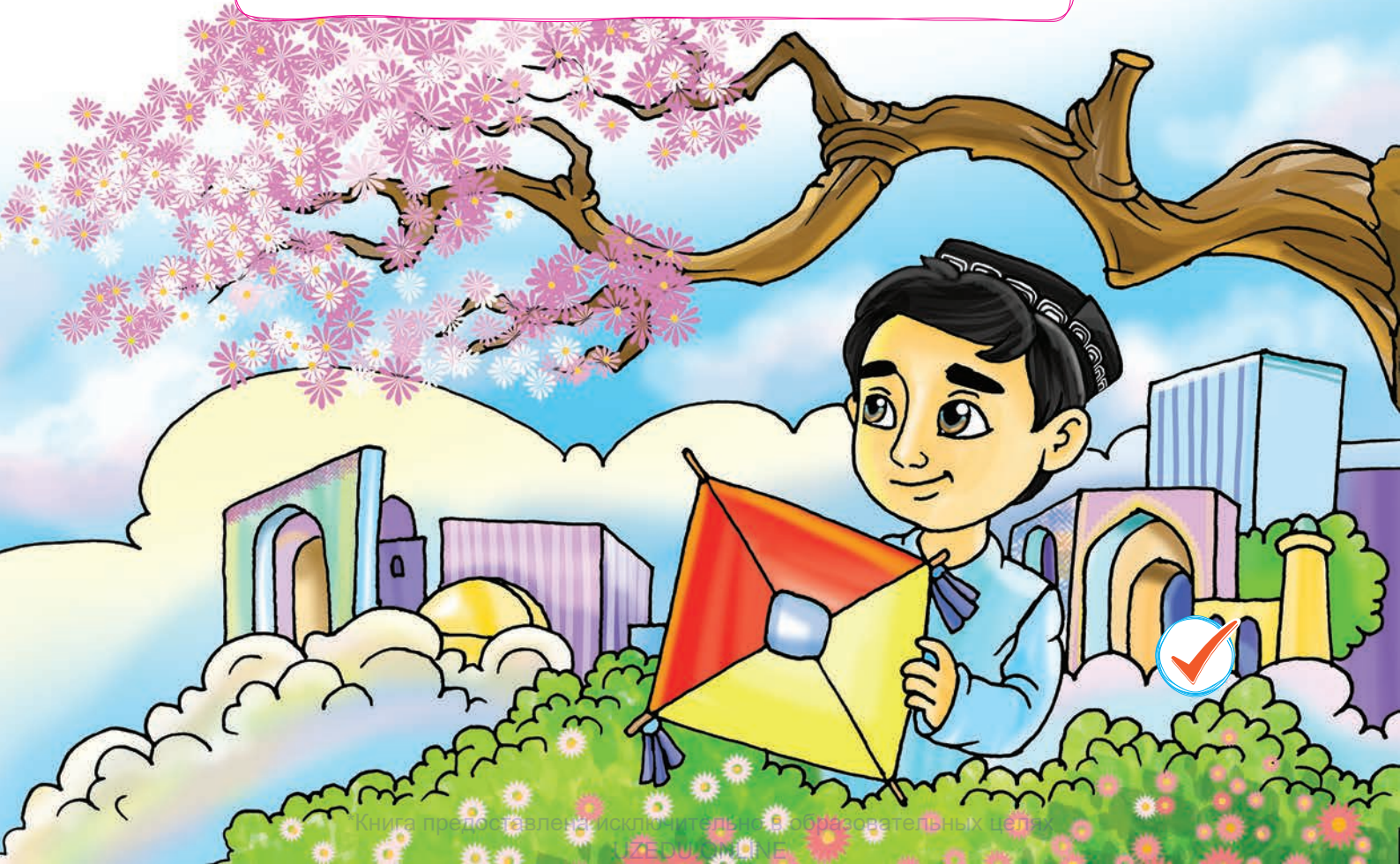
5



6



Shınıǵıw dápteriniń 39-betine «Ўlkemizde Nawrız» temasında súwret salıń.

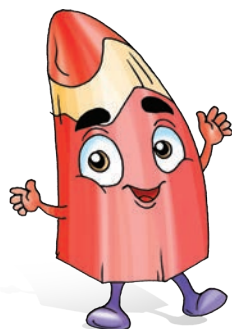
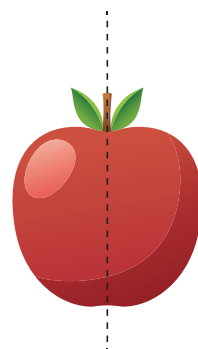
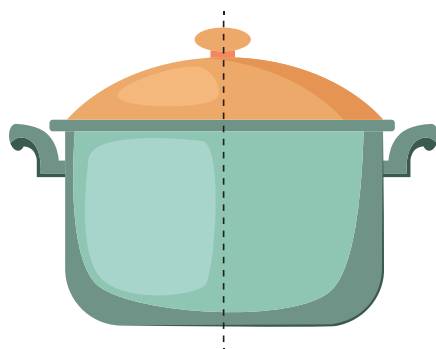
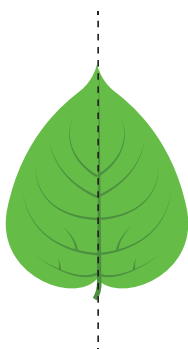
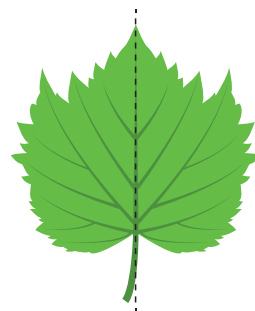
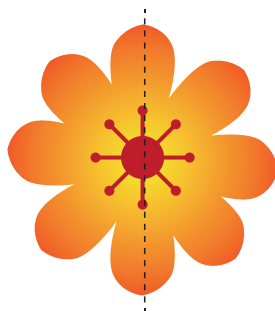
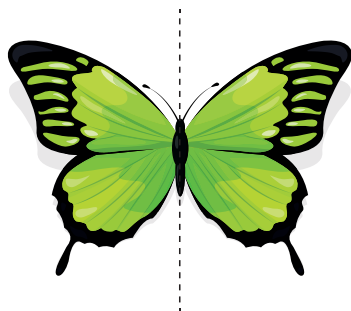




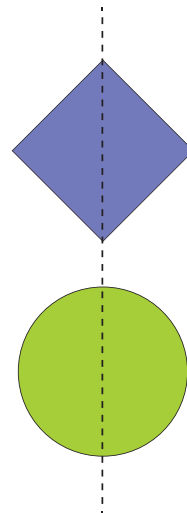
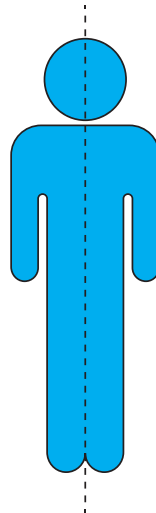
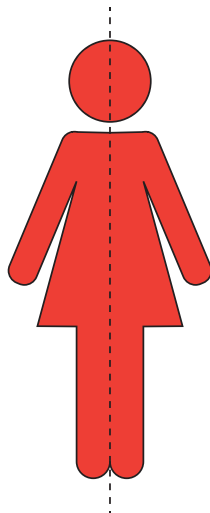
# КОМПОЗИЦИYA



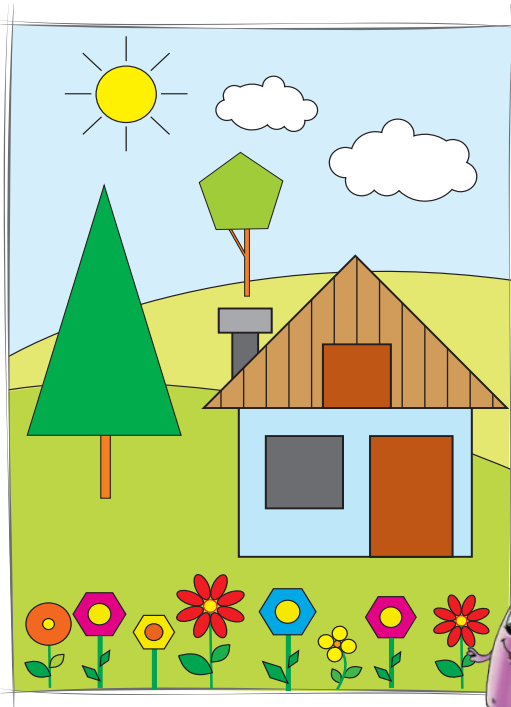
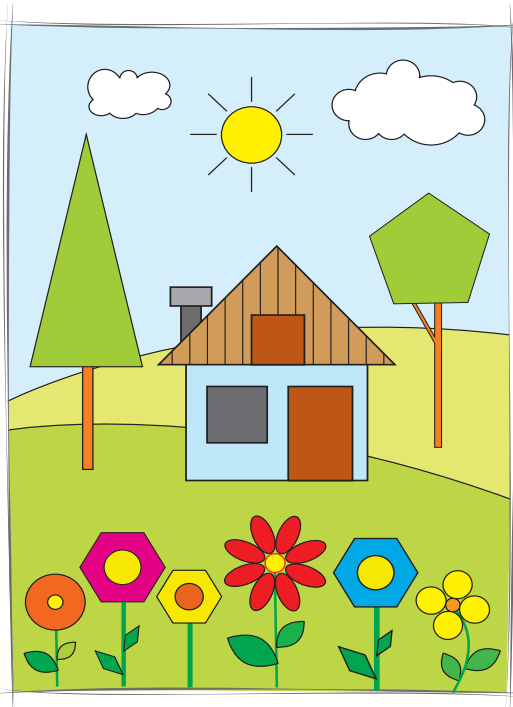
## «Geometriyalıq figuralardan payda bolǵan tábiyat» temasında kompoziciya islew



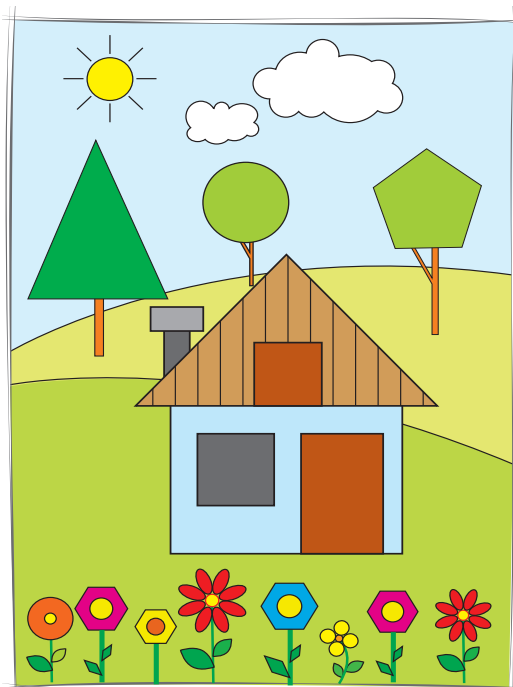
Simmetriya eki táreptiń teńligi







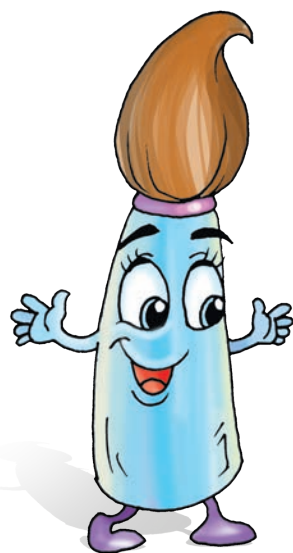
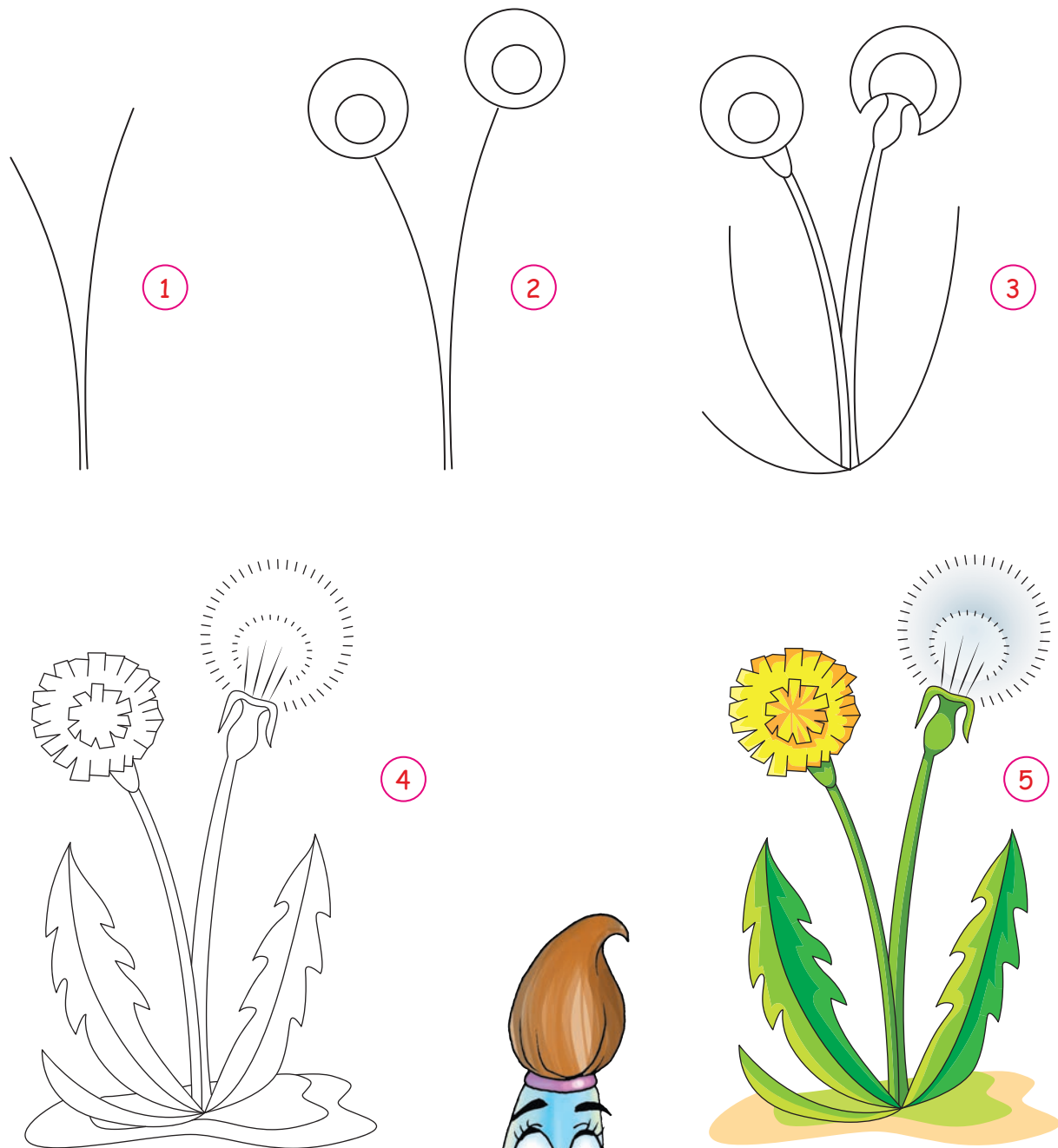
**Kompoziciya bul – súwret elementleriniń óz ara baylanıslılıǵı.**

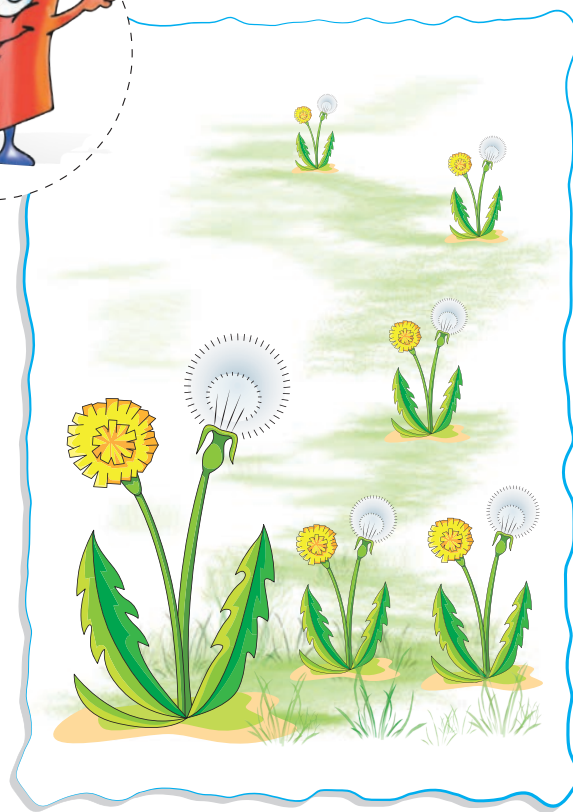
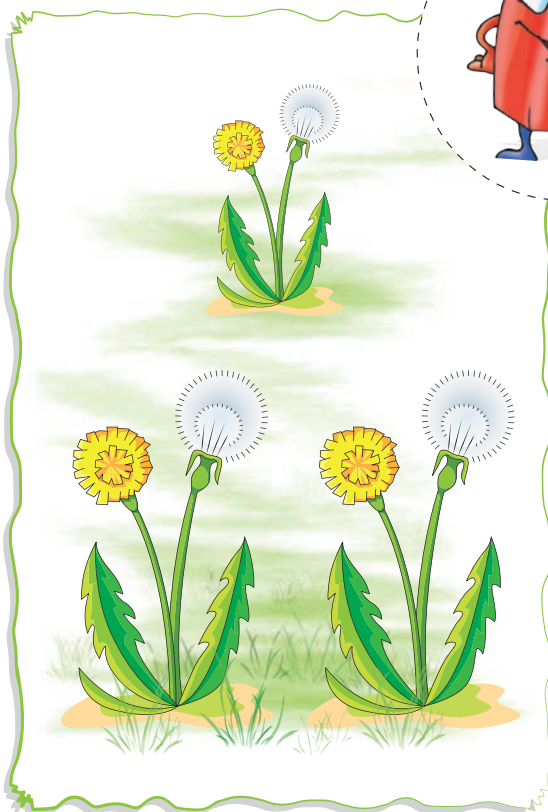
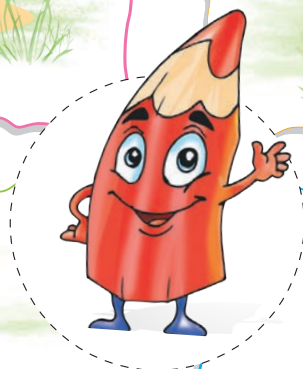


Shınıǵıw dápteriniń 41-betine «Geometriyalıq figuralardan payda bolǵan tábiyat» temasında kompoziciya isleń.



## «Sarı gül» (ot-shópler menen) temasında kompoziciya islew

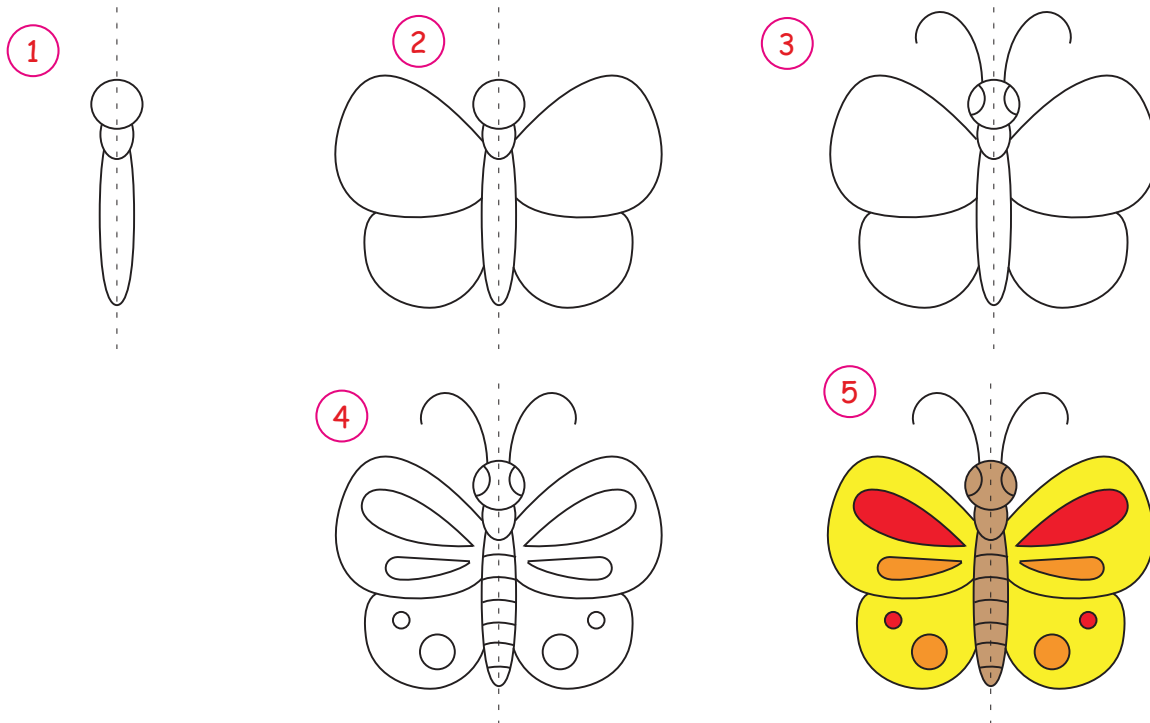




Shiniğıw dápteriniń 43-betine «Sarı gúl»  
(ot-shópler menen) kompoziciyasın salıń.



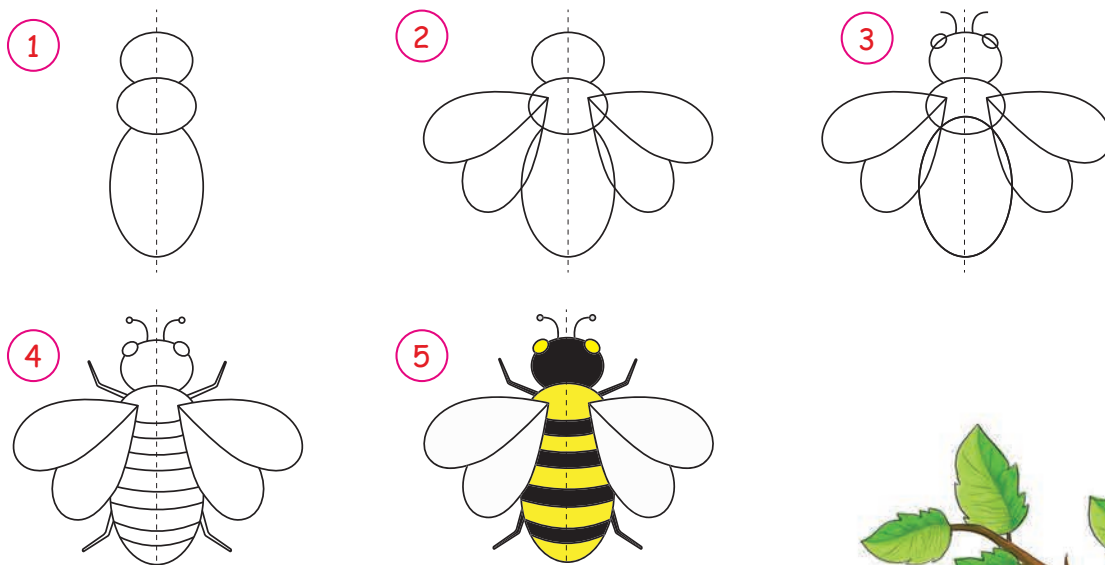
## «Gúbelek» (gúller ústinde) temasında kompoziciya islew



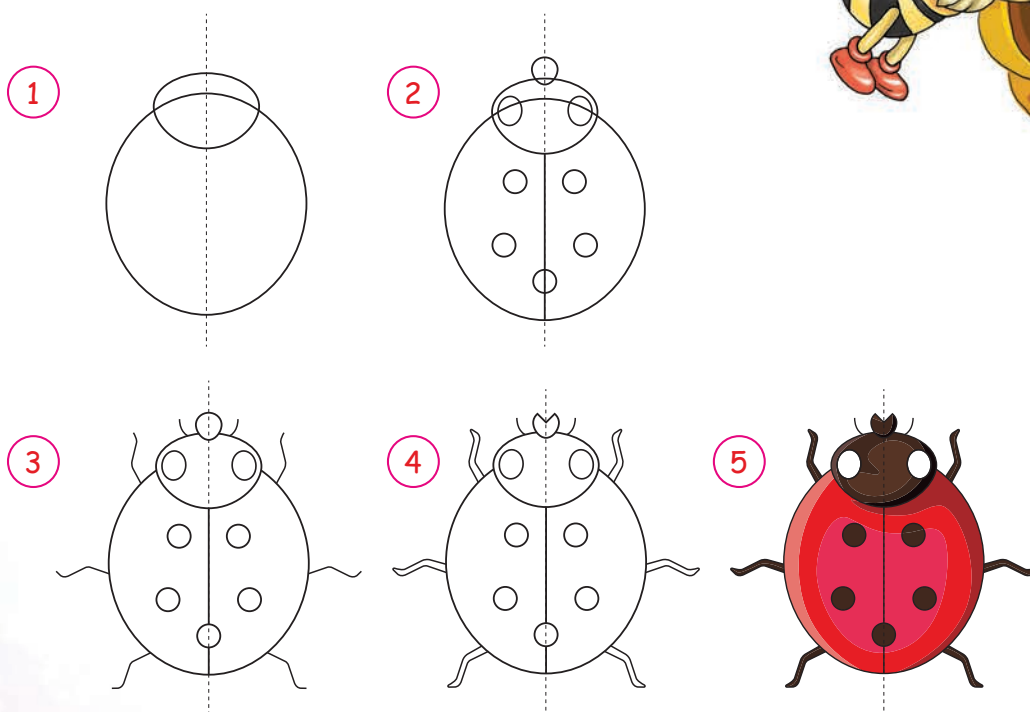
Shınıǵıw dápteriniń 45-be-  
tine «Gúbelekler» temasında  
súwret salıń



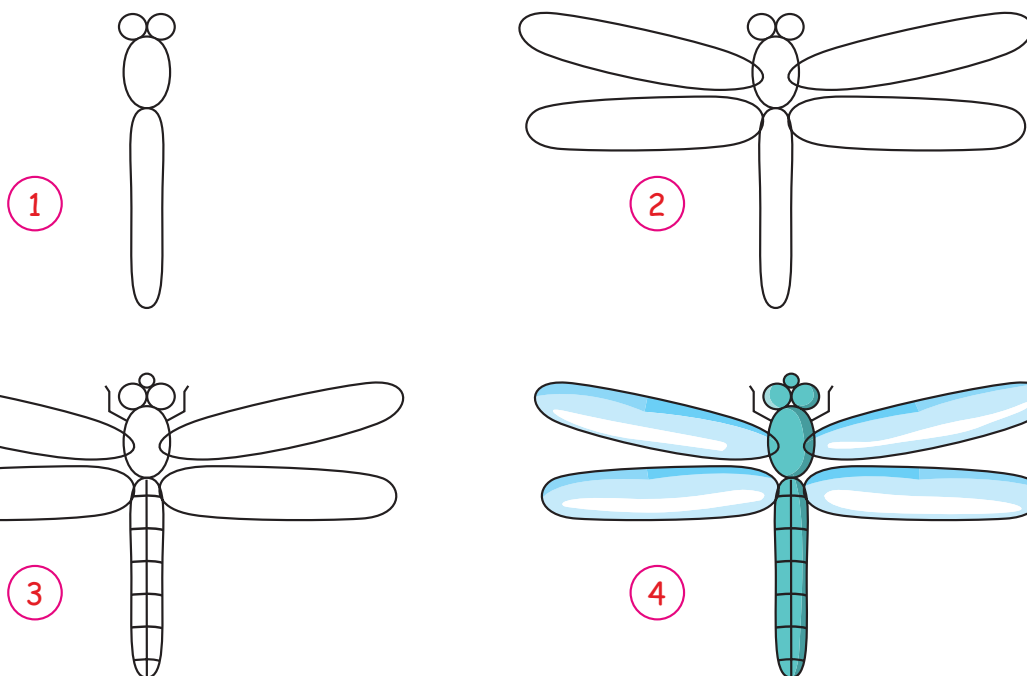
## «Pal hárre hám xanqızı» (pal hárre uyası hám gúller) temasında kompoziciya islew

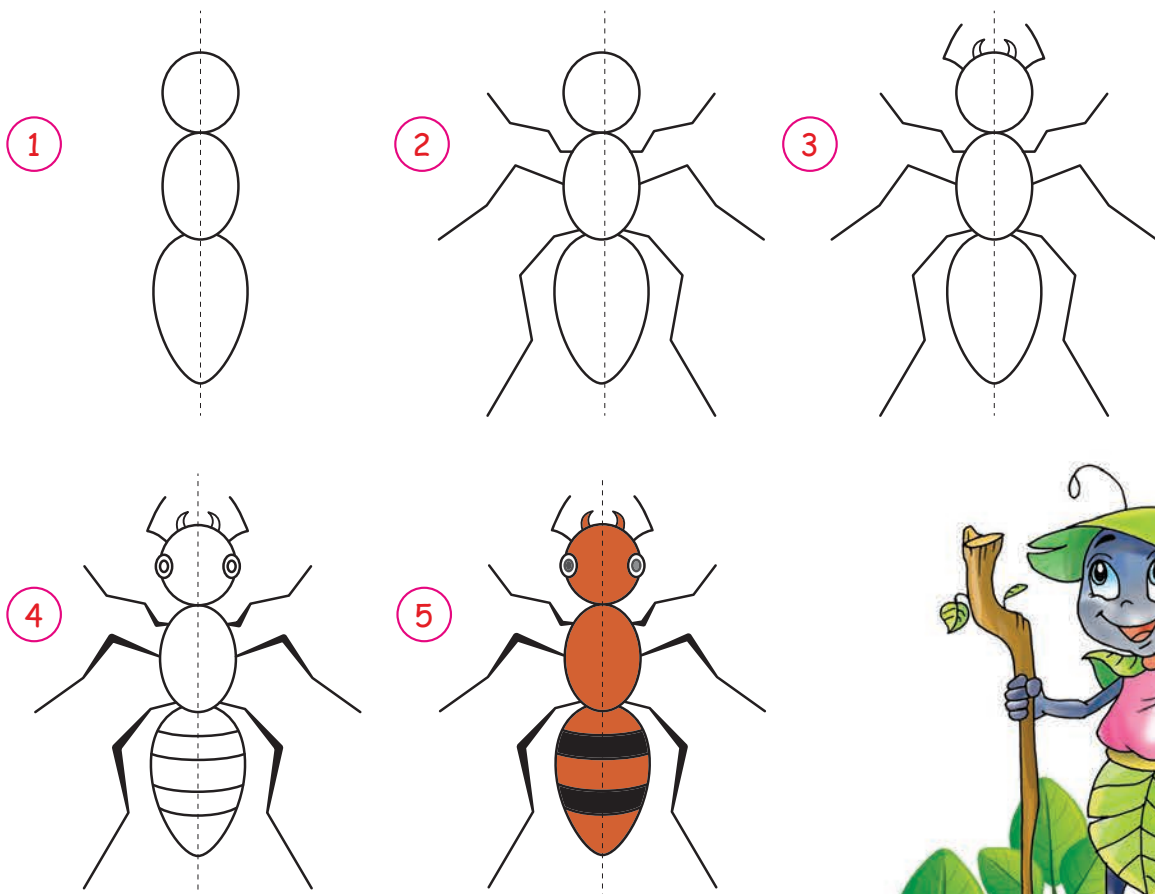


Shınıǵıw dápteriniń 47-betine  
«Pal hárre hám xanqızı» temasında  
súwret salıń.



## «lynelik hám qumırsqa» (terek shaqası hám japıraqlarda) temasında kompoziciya islew





Shiniqiw dápteriniń 49-betine «lynelik hám qumırsqa» temasında súwret salıń.



## «Тáбиyат qushađındađı shıbın-shirkey» temasında kompoziciya islew



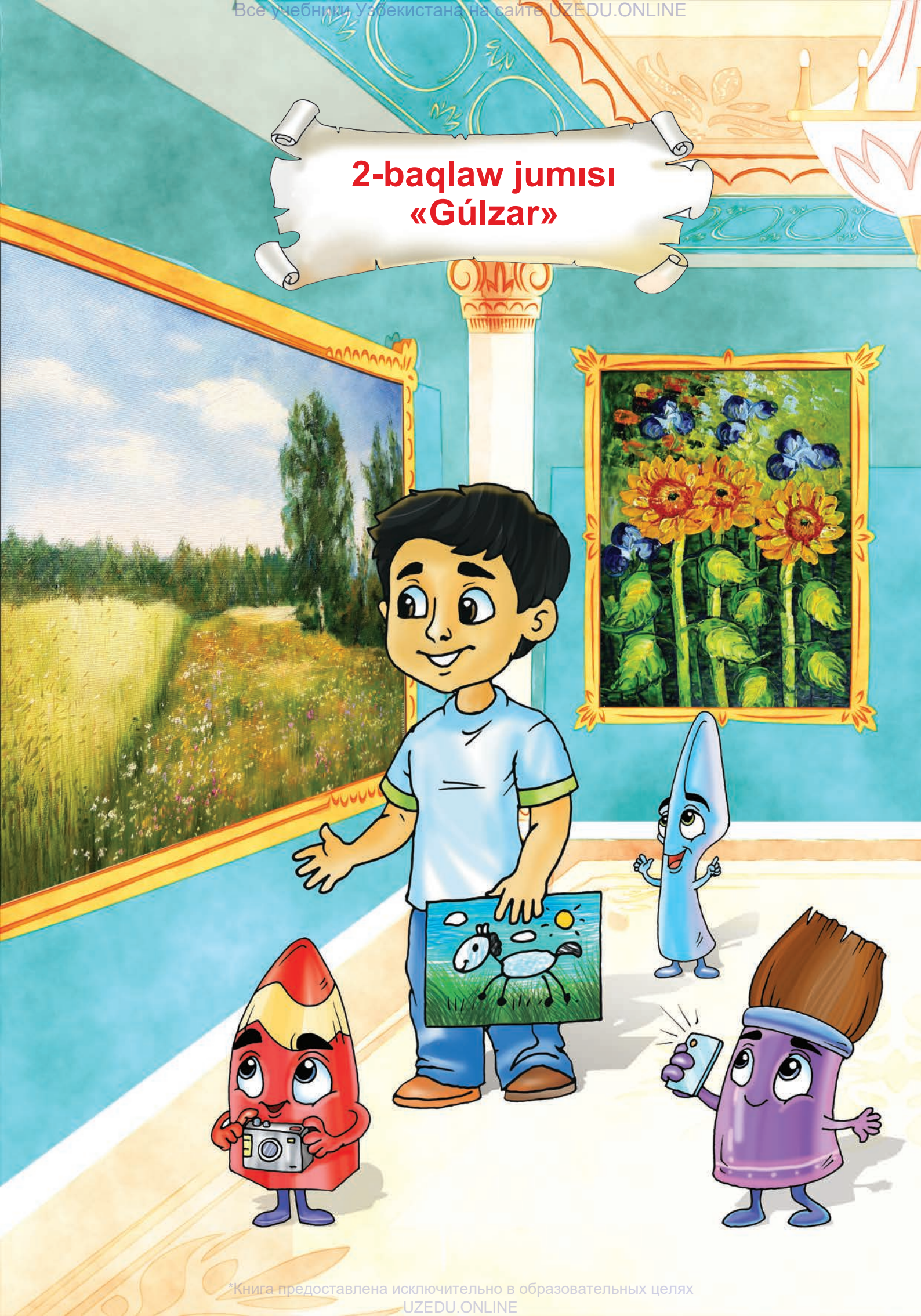




Shınıǵıw dápteriniń 51-betine «Tábiyat qushaǵındaǵı shıbın-shirkey» temasında súwret salıń.



## 2-baqlaw jumısı «Gúlar»



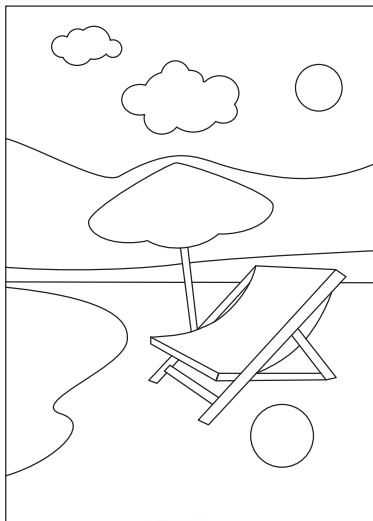


Shınıǵıw dápteriniń 53-betine «Gúlzar»  
temasında súwret salıń.

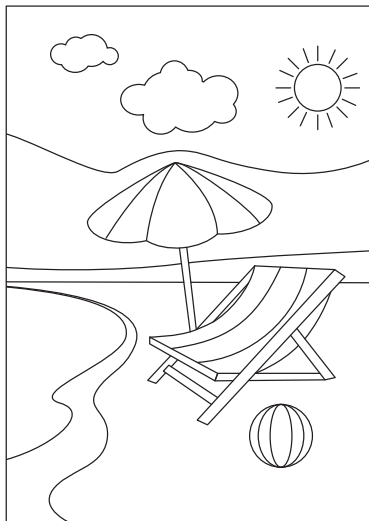


## «Jazgi sayaxat» temasında kompoziciya islew

1



2



3



Shinigiw dápteriniń 55-betine «Jazgi sayaxat» temasında súwret salıń.

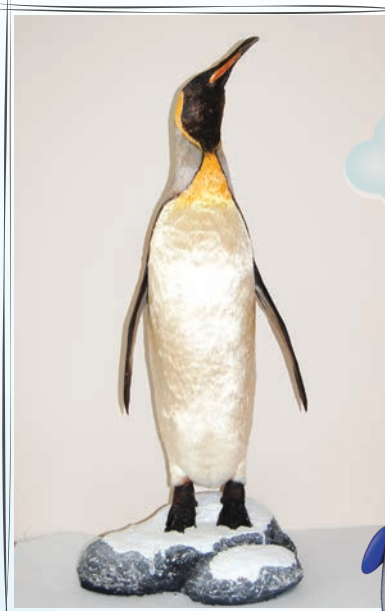
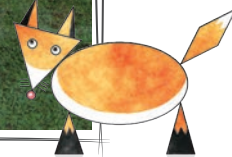
68

# SÁLEM DEM ALÍW ORNÍ

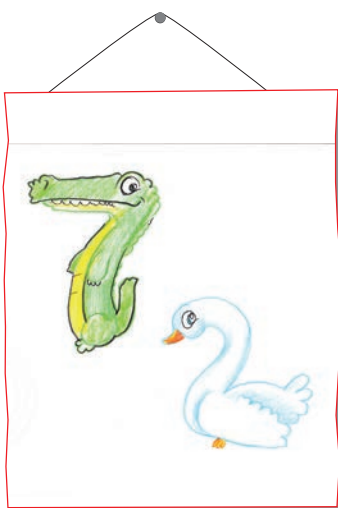
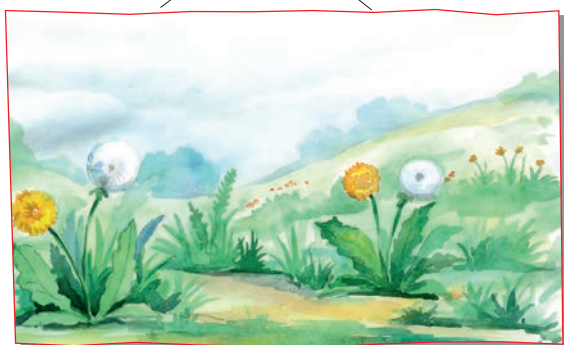
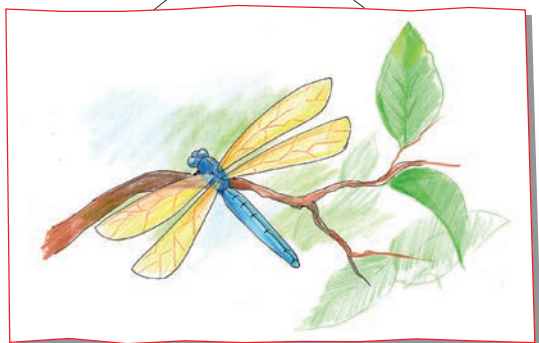




# Tábiyat muzeyine sayaxat



## Meniń birinshi súwretlerim



*O'quv nashri*

**Alfiya Salixova, Dilfuza Shayakubova, Barno Yunusova**

# **Tasviriy san'at**

*Umumiy o'rta ta'lim maktablarining  
1-sinfi uchun darslik  
(Qoraqalpoq tilida)*

*Xudojnik Umid Sulaymonov*

*Awdarmashi Zulfiya Oserbaeva  
Redaktor Suluxan Atimuratova  
Tex.redaktor Akmal Sulaymonov  
Dizayner Dilmurod Mulla-Axunov  
Kórk.redaktor Sarvar Farmonov  
Betlewshi Alimardon Aqilov  
Korrektor Gózzal Nizanova*

Basiwga ruqsat etildi 07.06.2021-jili. Formatı 60x84 1/8  
Arial garniturası. Keql 18 shponlı. Ofset baspa.  
Shártli baspa tabađı 8,37. Esap baspa tabađı 9,26.  
Nusqası 14 580 dana. Buyırtpa №

«Kolorpak» JSHJ baspaxanasında basıp shıgarıldı.  
Tashkent qalası, Yunusabad rayonu, Yangishahar kóshesi, 1-A úy.



**COLORPACK**